



COMPRESORES

JOSVAL

Desde 1.958



Creative Spirit

CATALOGUE



In 1958, before the huge growth experienced by the transport sector and as a result of working with the repair of brakes, JOSVAL was born. An initiative from two resourceful people with a strong commitment for servicing and quality, culminated in an air compressors manufacturing factory.

Nowadays, Service, Technology and Quality keep remaining our company guidelines. We manufacture in a different way, innovating and constantly adapting to the times and needs.

From our beginnings, we care of every piece for getting the maximum quality, because we know that compressed air is essential for many business processes.





Piston compressors

6

- CIERZO series	8
- CLASSIC series	10
- MOTOR DRIVEN compressors	14
- BASE PLATES	16
- HEADS	18
- AQUATIC series	20



Soundproofed piston compressors

22

- SAUBER series	24
- BRISA series	26
- BRISA PLUS series	26
- 4UATTRO series	28
- MONCAYO series	32



Screw compressors

34

- PRACTIKO series	36
- TECONROT series	38
- MISTRAL series	40
- GRAFENO series	46



High Pressure

50

- THORDÖN	50
-----------	----



Air treatment

52

- DRYERS EDELWEISS series	53
- ADSORPTION DRYERS	54
- WATER/OIL SEPARATORS	54
- FILTERS	55
- TANKS	56
- AIR PIPELINE SYSTEM	58



Lubricants

59

Energy efficiency

60



Always by your side

On our website you will find all details, photographs and technical info of our products to make your choice easier about Josval range.

www.compresoresjosval.com



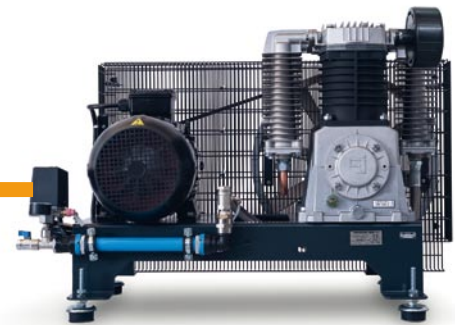
NEW ARRIVALS

2014



MOTOR DRIVEN compressors

Portable compressors with twin tanks. Idle function optional.



BASEPLATES

Pipe pressure monitoring optional.



PRACTIKO series

Compact screw compressor.



4UATTRO series

New models with built-in dryer.



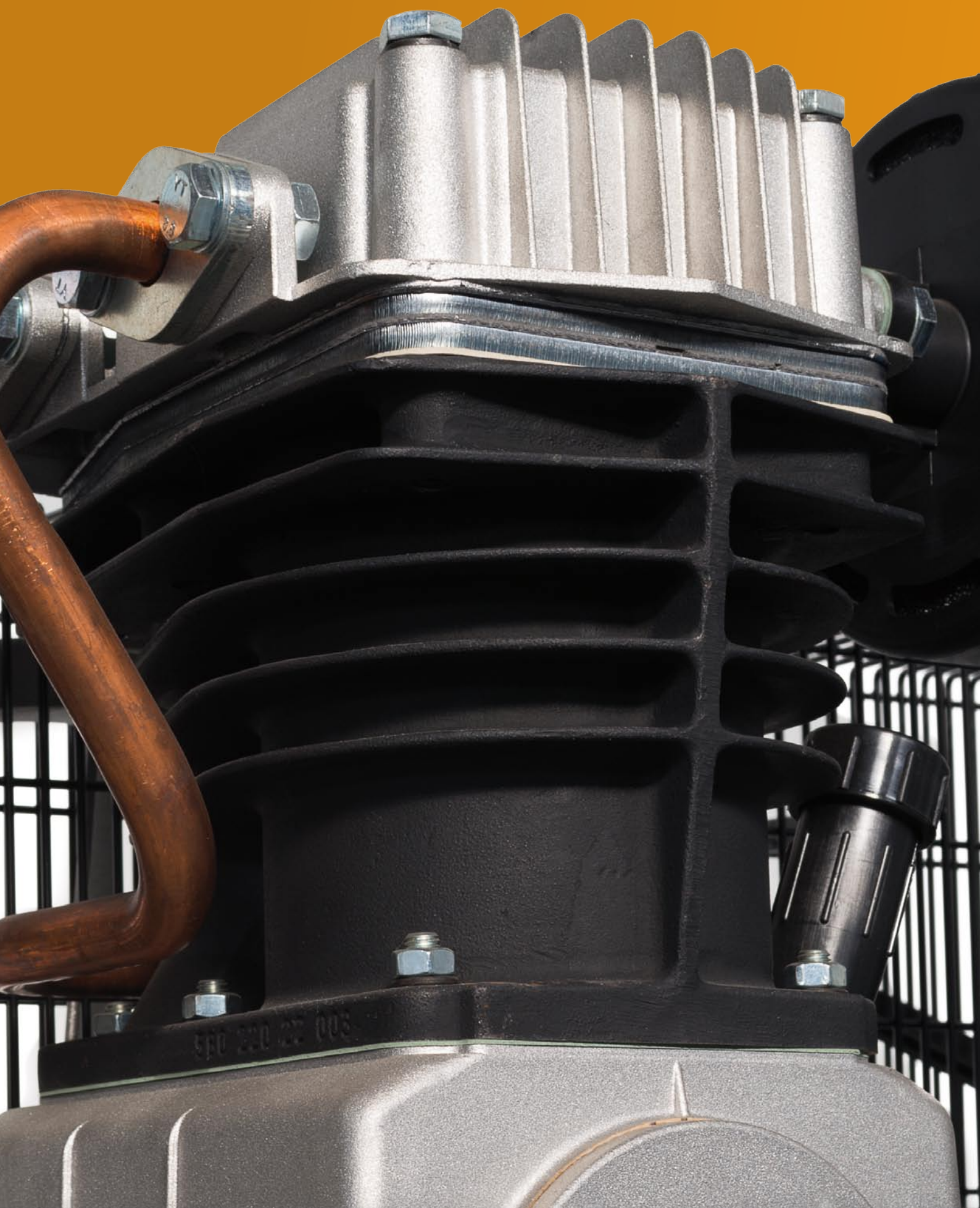
MISTRAL series

Models with integrated Variable Speed.

THORDÖN

Portable high pressure compressor.





PISTON

compressors

Piston compressors now represent nearly 80% of the overall sales in the world. JOSVAL piston compressors have become an indispensable tool for those of our customers who appreciate its easy installation, its management and in particular its reliability and low maintenance.

Over the years when customers need to expand, they repeatedly turn to JOSVAL.

CIERZO series _____

CLASSIC series _____

MOTOR DRIVEN compressors _____

BASE PLATES _____

HEADS _____

AQUATIC series _____



CIERZO

series

This range of air compressors covers both hobby and semi-professional needs. They are designed and developed to achieve the best quality-price ratio on the market. These are simple to use, with a low noise level and a great production of air, while operating at very low rpms that prolong the life of each machine.

Features

- Cast iron CYLINDER that extends its useful life and its performance.
- Oversized FINS for best cooling.
- Ductile CRANKSHAFT casting with double support for greater stability.
- REED VALVES with multiple steps of air that provide a greater flow.
- Oversized FAN PULLEY for optimum cooling of the head.
- High efficiency AIR FILTER.
- Operation at low R. P. M. with low level of noise.
- Thermal overload PRESSURE SWITCH (only three phase models).

AVAILABILITY OF SPECIAL ANTI-DUST FILTERS

(quarries, cement, etc.)

See price depending on model.



Air flow is set according to ISO 1217.



All compressors up to 100 liters are equipped with wheels except model NK-15.



SINGLE PHASE

Direct drive



Code	Model	HP	Kw	Lts	Cyl./St.	l/m	m ³ /h	r.p.m.	LxWxH mm	Kg.
5083017	NK-15	2	1,5	15	1/1	202	12,1	2800	500x440x500	17
5083027	NK-25	2	1,5	25	1/1	202	12,1	2800	610x280x560	26
5083057	NK-50	2	1,5	50	1/1	202	12,1	2800	720x340x740	36
5093058	NKV-50	3	2,2	50	2/1	357	21,4	2800	820x360x650	44

Belt drive



Code	Model	HP	Kw	Lts	Cyl./St.	l/m	m ³ /h	r.p.m.	LxWxH mm	Kg.
5081056	C-2/50M -Bv-	2	1,5	50	2/1	280	16,8	1020	810x380x800	58
5081076	C-2/100M -Bv-	2	1,5	100	2/1	280	16,8	1020	1100x390x870	73
5091026	C-3/25M-A -Bv-*	3	2,2	25	2/1	330	19,8	1020	960x520x680	62
5091056	C-3/50M -Bv-	3	2,2	50	2/1	330	19,8	1020	810x380x800	60
5091076	C-3/100M -Bv-	3	2,2	100	2/1	330	19,8	1020	1100x390x870	75
5091086	C-3/200M -Bv-	3	2,2	200	2/1	330	19,8	1020	1420x470x1040	92

*Equipped with automatic valve, recommended for heavy-duty or textured paint jobs.

Belt driven compressors (50 and 100 liters) are equipped with a hose reel and a 5 meter air hose kit with quick coupler and fitting.



C-7,5/500 -Bv-



THREE PHASE

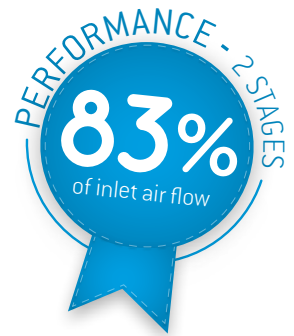
Belt drive

Code	Model	HP	Kw	Lts	Cyl./St.	l/m	m ³ /h	r.p.m.	LxWxH mm	Kg.
5181077	C-2/100 -Bv-	2	1,5	100	2/1	280	16,8	1020	1100x390x870	73
5191187	C-3/200 -Bv-	3	2,2	200	2/1	330	19,8	1020	1420x470x1040	92
5219077	C-5,5/100 -Bv-	5,5	4	100	2/1	600	36	900	1040x440x980	93
5219197	C-5,5/270 -Bv-	5,5	4	270	2/1	600	36	900	1490x520x1100	131
5229077	C-7,5/100 -Bv-	7,5	5,5	100	2/1	900	54	900	1040x440x980	98
5229217	C-7,5/500 -Bv-	7,5	5,5	500	2/1	900	54	900	2000x650x1350	206
5239213	C-10/500	10	7,5	500	2/2	1100	66	985	2000x650x1350	211
5219207	C-5,5/500D -Bv-	2x5,5	2x4	500	4/1	2x600	2x36	900	2000x650x1350	278
5229207	C-7,5/500D -Bv-	2x7,5	2x5,5	500	4/1	2x900	2x54	900	2000x650x1350	298

CLASSIC

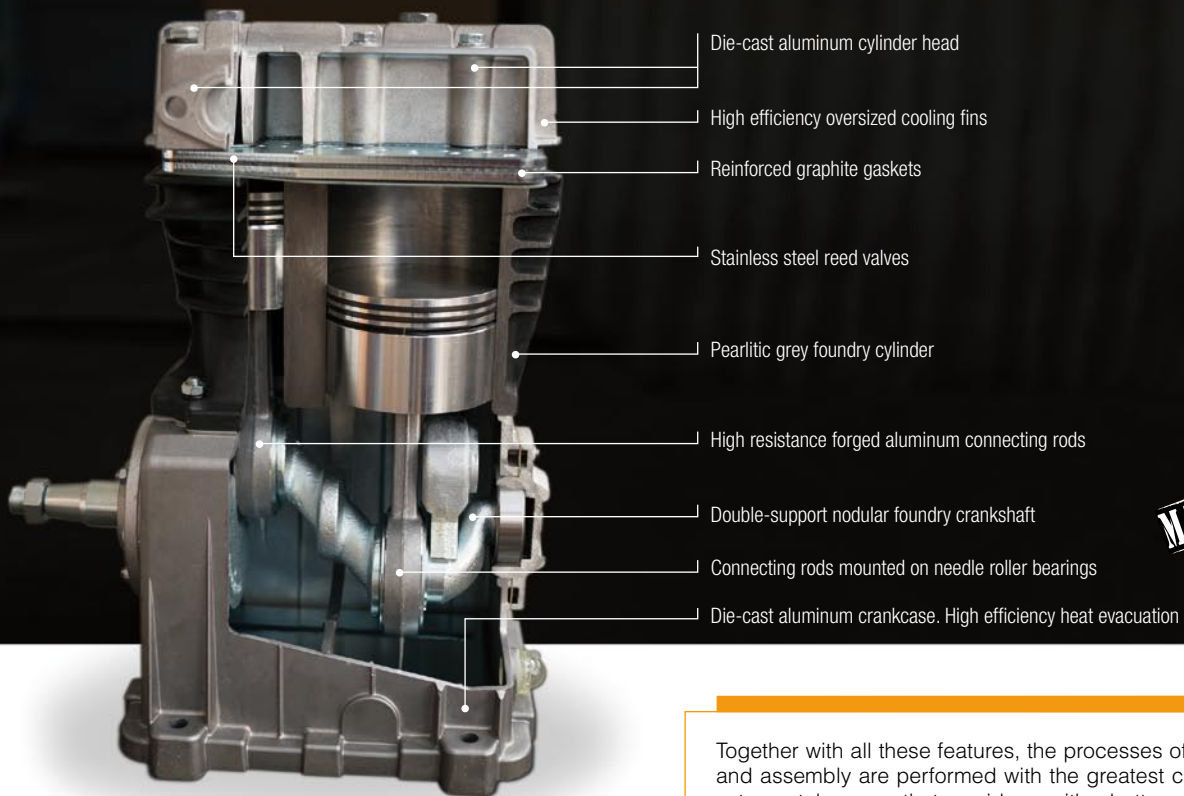
series

CLASSIC series is the hallmark of Compresores JOSVAL, the result of more than 50 years of experience in the sector. These compressors are probably the most robust, most reliable, and have the greatest air flow on the market.



Air flow is set according to ISO 1217.

CLASSIC Head Series



- Die-cast aluminum cylinder head
- High efficiency oversized cooling fins
- Reinforced graphite gaskets
- Stainless steel reed valves
- Pearlitic grey foundry cylinder
- High resistance forged aluminum connecting rods
- Double-support nodular foundry crankshaft
- Connecting rods mounted on needle roller bearings
- Die-cast aluminum crankcase. High efficiency heat evacuation



Together with all these features, the processes of machining and assembly are performed with the greatest care, getting extreme tolerances that provide us with a better performance of the air pump and total reliability.

Features

- Cast iron CYLINDER of superior strength that prolongs its life and its performance. (1)
- Oversized FINS for best cooling.
- Ductile CRANKSHAFT casting with double support for greater stability and dynamic balance. (2)
- VALVE PLATE of stainless steel reeds, with increased resistance to the temperatures and corrosion while providing a greater flow rate. (3)
- CONNECTING RODS in one piece, mounted on needle bearings to ensure lower friction, higher performance and less vibrations. (4)
- Die-cast aluminum CRANKCASE for better thermal evacuation. (5)
- Oversized FAN PULLEY for optimal cooling of the head. (6)
- ELECTRIC MOTOR for low power consumption, high efficiency IE2 and service S1. (7)
- Thermal overload PRESSURE SWITCH (only three phase models).



Especially for painting: the compressor model MC-MLC-25 is equipped with automatic valve for its continuous operation and start/stop switch. It is recommended for heavy-duty or textured paint jobs.



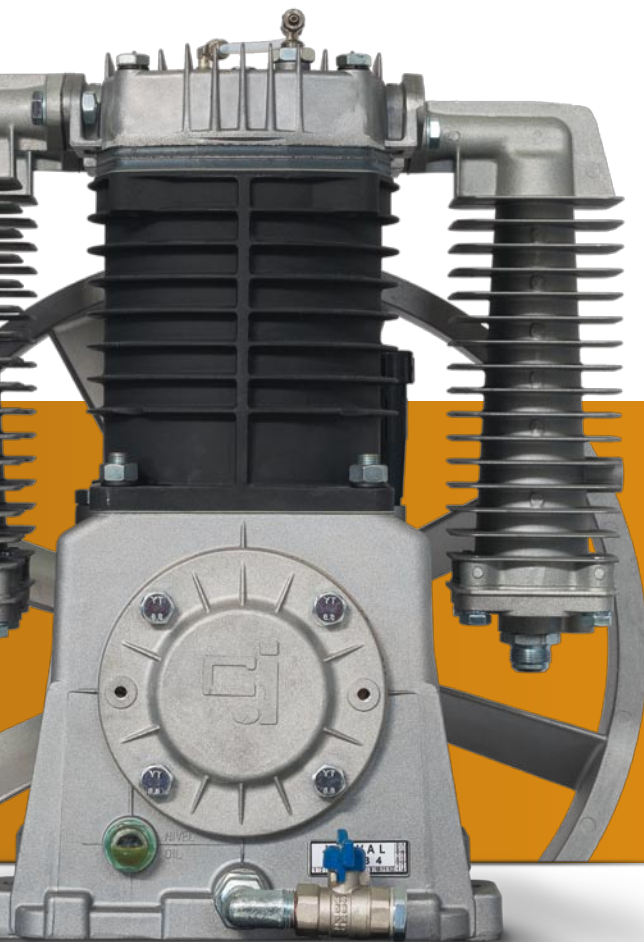
MC-MLC-25/A*

SINGLE PHASE



Code	Model	HP	Kw	Lts	Cyl./St.	l/m	m ³ /h	r.p.m.	LxWxH mm	Kg.
5081020	MC-MLC-25/A*	2	1,5	25	2/1	310	18,6	920	960x520x680	65
5081021	MC-MLC-25	2	1,5	25	2/1	310	18,6	920	960x520x680	65
5081051	MC-MLC-50	2	1,5	50	2/1	310	18,6	920	1010x590x760	75
5081070	MC-MLC-100	2	1,5	100	2/1	310	18,6	920	1040x440x840	76
5081180	MC-MLC-200	2	1,5	200	2/1	310	18,6	920	1380x480x950	104
5099021	MC-MAD-25	3	2,2	25	2/2	400	24	920	960x520x710	74
5099051	MC-MAD-50	3	2,2	50	2/2	400	24	920	1010x590x790	83
5099071	MC-MAD-100	3	2,2	100	2/2	400	24	920	1040x440x870	81
5099181	MC-MAD-200	3	2,2	200	2/2	400	24	920	1380x480x980	111
5099191	MC-MAD-300	3	2,2	270	2/2	400	24	920	1500x490x1010	124

*Equipped with automatic valve, recommended for heavy-duty or textured paint jobs.



AVAILABILITY OF SPECIAL ANTI-DUST FILTERS
(quarries, cement, etc.)

See price depending on model.



- Piston compressors of the CLASSIC series incorporate an head of high performance and robustness, are bicilyndric of 1 or 2 stages and are electronically balanced.
- The compressors with tanks from 25 to 100 liters are portable and are equipped with wheels. The tanks from 200 liters on are static.
- Tanks are manufactured according to EU directives 2009/105/EC and 97/23/EC.
- For its correct operation, the compressors in this series must be installed on the vibration supports supplied for leveling the compressors with the ground. In addition, for cooling purposes, you must provide a minimum distance of 50 cm between the compressor and the nearest wall, and check the correct rotational direction indicated by the red arrow located in the belt guard.

THREE PHASE 10 BAR



Code	Model	Motor		Lts	Cyl./St.	Flow		r.p.m.	LxWxH		Kg.
		HP	Kw			l/m	m ³ /h		mm	mm	
5181021	MC-LC-25	2	1,5	25	2/1	310	18,6	1135	960x520x680		65
5181051	MC-LC-50	2	1,5	50	2/1	310	18,6	1135	1010x590x760		75
5181071	MC-LC-100	2	1,5	100	2/1	310	18,6	1135	1040x440x840		76
5181181	MC-LC-200	2	1,5	200	2/1	310	18,6	1135	1380x480x950		104
5199021	MC-AD-25	3	2,2	25	2/2	400	24	1135	960x520x710		74
5199051	MC-AD-50	3	2,2	50	2/2	400	24	1135	1010x590x790		83
5199071	MC-AD-100	3	2,2	100	2/2	400	24	1135	1040x440x870		81
5199181	MC-AD-200	3	2,2	200	2/2	400	24	1135	1380x480x980		111
5199191	MC-AD-300	3	2,2	270	2/2	400	24	1135	1500x490x1010		124
5209191	MC-AE-300	4	3	270	2/2	590	35,4	910	1500x490x1120		155
5209211	MC-AE-500	4	3	500	2/2	590	35,4	910	1930x540x1190		215
5219071	MC-AF-100	5,5	4	100	2/2	780	46,8	1085	1040x440x980		125
5219191	MC-AF-300	5,5	4	270	2/2	780	46,8	1085	1500x490x1120		163
5219211	MC-AF-500	5,5	4	500	2/2	780	46,8	1085	1930x540x1190		223
5229211	MC-AG-500	7,5	5,5	500	2/2	1010	60,6	795	1930x540x1300		277
5229215	MC-AG-500/A*	7,5	5,5	500	2/2	1010	60,6	795	1930x610x1300		285
5239211	MC-AH-500	10	7,5	500	2/2	1400	84	1125	1930x540x1300		286
5239215	MC-AH-500/A*	10	7,5	500	2/2	1400	84	1125	1930x610x1300		294
5219209	MC-AF-500D	2x5,5	2x4	500	4/2	2x780	2x46,8	1085	1930x540x1190		315

*A: star delta start (Y-Δ)

Compressors of 7,5 and 10 HP can be chosen with star delta start or direct start.



To perform the treatment of air from a CLASSIC series compressor, you will need a refrigerant dryer with built-in cooler series REDE and we recommend the use of a particle separator filter series FEP.



THREE PHASE 15 BAR



Code	Model	Motor		Lts	Cyl./St.	Flow		r.p.m.	LxWxH		Kg.
		HP	Kw			l/m	m ³ /h		mm	mm	
5192021	MC-AD2-25	3	2,2	25	2/2	400	24	1135	960x520x710		76
5192051	MC-AD2-50	3	2,2	50	2/2	400	24	1135	1010x590x790		85
5192181	MC-AD2-200	3	2,2	200	2/2	400	24	1135	1380x480x980		116
5192191	MC-AD2-300	3	2,2	300	2/2	400	24	1135	1600x490x1010		139
5202191	MC-AE2-300	4	3	300	2/2	590	35,4	910	1600x490x1120		170
5202211	MC-AE2-500	4	3	500	2/2	590	35,4	910	1930x540x1190		215
5212071	MC-AF2-100	5,5	4	100	2/2	780	46,8	1085	1040x440x980		130
5212191	MC-AF2-300	5,5	4	300	2/2	780	46,8	1085	1600x490x1120		178
5212211	MC-AF2-500	5,5	4	500	2/2	780	46,8	1085	1930x540x1190		223
5222211	MC-AG2-500	7,5	5,5	500	2/2	1010	60,6	795	1930x540x1300		277
5222215	MC-AG2-500/A*	7,5	5,5	500	2/2	1010	60,6	795	1930x610x1300		285
5232211	MC-AH2-500	10	7,5	500	2/2	1400	84	1125	1930x540x1300		286
5232215	MC-AH2-500/A*	10	7,5	500	2/2	1400	84	1125	1930x610x1300		294

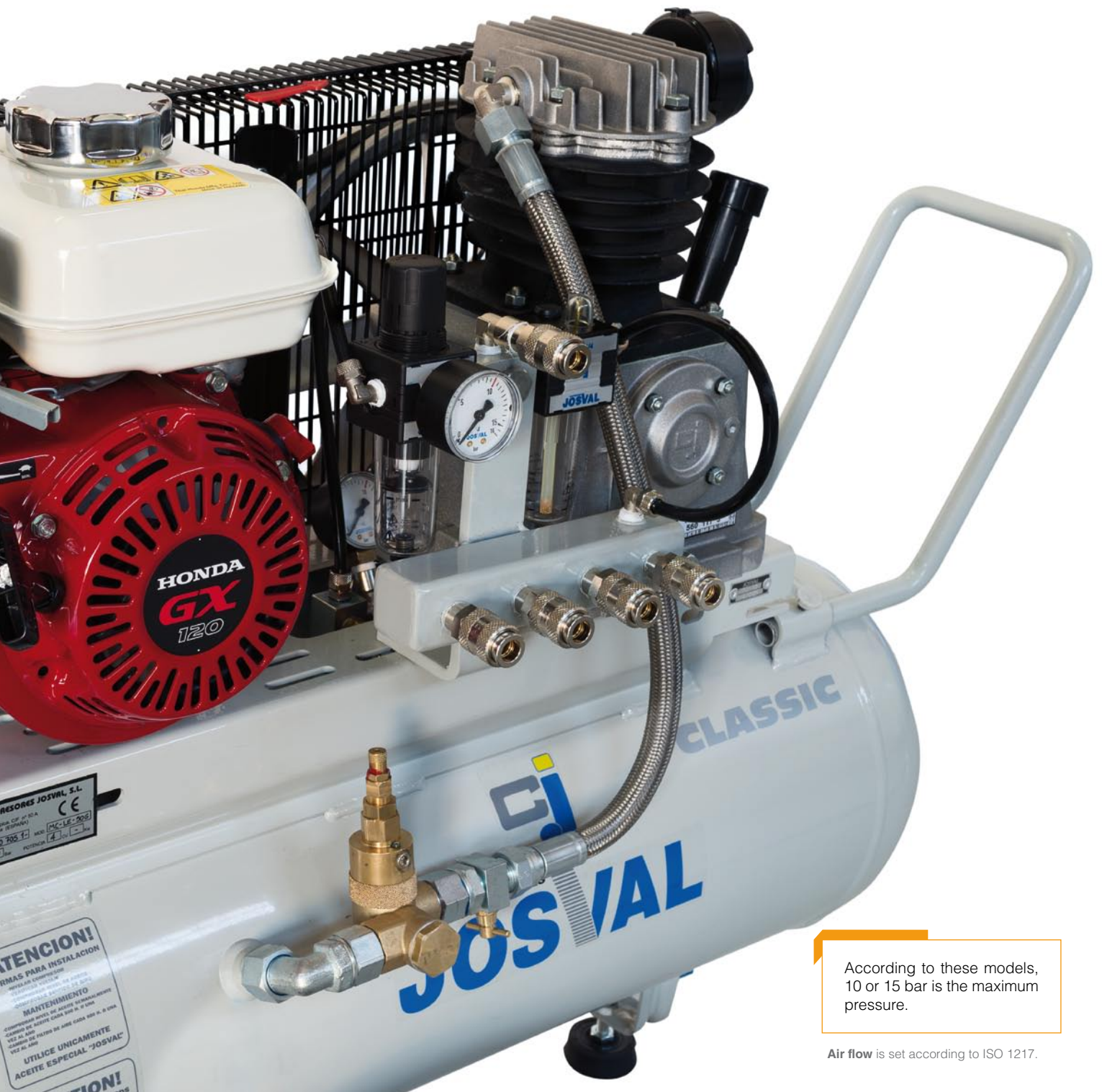
*A: star delta start (Y-Δ)

Compressors, whose maximum working pressure is 10 bar, are preset with a minimum standard pressure of 6 bar and maximum of 8 bar.
Compressors, whose maximum working pressure is 15 bar, are preset with a minimum standard pressure of 10 bar and maximum of 12 bar.

MOTOR DRIVEN

compressors

This is the most complete and effective solution where there is no electrical supply (mobile workshops, agricultural activities, etc.). Additionally, thanks to their pneumatic tires, MOTOR DRIVEN compressors are ideal for your travel in any type of terrain.



According to these models, 10 or 15 bar is the maximum pressure.

Air flow is set according to ISO 1217.

Features

- Petrol or diesel ENGINES.
- Spring-mounted SHOCK ABSORBERS (models of 8,5 and 9HP), greater stability and less vibrations.
- Pneumatic WHEELS to fit any type of terrain (models up to 100L).
- Easy transport and handling.
- Competitive and high-performance versions available.

Idle function optional

See price depending on model.

AVAILABILITY OF SPECIAL ANTI-DUST FILTERS

(quarries, cement, etc.)

See price depending on model.



PETROL

CIERZO HEAD



Code	Model	HP	Model	Lts	Cyl./St.	l/m	m ³ /h	r.p.m.	LxWxH mm	Kg.
5207028	C-3/25G -Bv-	4	GX 120	25	2/1	330	19,8	1020	830x610x610	61
5207556	C-3/20+20G -Bv-	4	GX 120	20+20	2/1	330	19,8	1020	1000x700x710	63
5207058	C-3/50G -Bv-	4	GX 120	50	2/1	330	19,8	1020	1000x670x670	72

CLASSIC HEAD



Code	Model	HP	Model	Lts	Cyl./St.	l/m	m ³ /h	r.p.m.	mm	Kg.
5207021	MC-LE-25G	4	GX 120	25	2/1	310	18,6	1050	830x610x610	76
5207552	MC-LE-20+20G	4	GX 120	20+20	2/1	310	18,6	1050	1000x700x710	66
5207051-	MC-LE-50G	4	GX 120	50	2/1	310	18,6	1050	1000x670x670	84

CLASSIC HEAD



Code	Model	HP	Model	Lts	Cyl./St.	l/m	m ³ /h	r.p.m.	mm	Kg.
5217024	MC-AF2-25G	5,5	GX 160	25	2/2	400	24	1050	830x610x660	80
5217054	MC-AF2-50G	5,5	GX 160	50	2/2	400	24	1050	1000x670x720	80
5237074	MC-AH2-100G	9	GX 270	100	2/2	780	46,8	970	1200x600x1000	186
5237194	MC-AH2-300G	9	GX 270	300	2/2	780	46,8	970	1650x500x1100	191
5237077	MC-AH2-100G/AEB*	9	GX 270 SX	100	2/2	780	46,8	970	1200x600x1000	186
5237197	MC-AH2-300G/AEB*	9	GX 270 SX	300	2/2	780	46,8	970	1650x500x1100	191

*AEB: electric start with battery



DIESEL

CLASSIC HEAD



Code	Model	HP	Model	Lts	Cyl./St.	l/m	m ³ /h	r.p.m.	LxWxH mm	Kg.
5227077	MC-AG2-100D/AEB*	8,5	15 LD 400	100	2/2	780	46,8	970	1200x600x1000	195
5227197	MC-AG2-300D/AEB*	8,5	15 LD 400	300	2/2	780	46,8	970	1650x500x1000	235

*AEB: electric start with battery

Compressors, whose maximum working pressure is 10 bar, are preset with a minimum standard pressure of 6 bar and maximum of 8 bar.
Compressors, whose maximum working pressure is 15 bar, are preset with a minimum standard pressure of 10 bar and maximum of 12 bar.

BASE PLATES

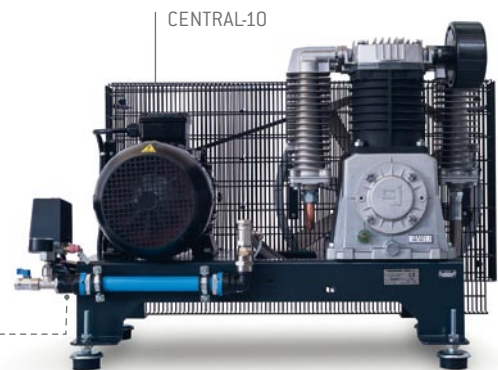
BASE PLATES are an effective and competitively-priced solution for those companies that cannot stop their activities and need a second compressor of support in times of need, such as in the case of failure or maintenance of the main compressor.



Air flow is set according to ISO 1217.

Features

- Cast iron CYLINDER of superior strength that prolongs its life and its performance.
- Oversized FINS for best cooling.
- Ductile CRANKSHAFT casting with double support for greater stability and dynamic balance.
- VALVE PLATE of stainless steel reeds, with increased resistance to the temperatures and corrosion while providing a greater flow rate.
- CONNECTING RODS in one piece, mounted on needle bearings to ensure lower friction, higher performance and less vibrations.
- Oversized CRANKCASE for better thermal evacuation.
- Oversized FAN PULLEY for optimal cooling of the head.
- ELECTRIC MOTOR for low power consumption, high efficiency IE2 and service S1.
- Thermal overload PRESSURE SWITCH (only three phase models).



For proper installation all models of BASE PLATES include an accessory kit that consists of a pressure switch, pressure gauge, a check valve and special anti-vibration rubbers.



AVAILABILITY OF SPECIAL ANTI-DUST FILTERS (quarries, cement, etc.)
See price depending on model.

Pipe pressure monitoring optional
Easy connection to air net

BASE PLATES



Code	Model	HP	Kw	Ph	l/m	m ³ /h	bar	r.p.m.	LxWxH mm	Kg.
5084000	CENTRAL-2M	2	1,5	1	310	18,6	10	920	620x340x400	35
5184001	CENTRAL-2	2	1,5	3	310	18,6	10	1135	620x340x400	35
5095001	CENTRAL-3M	3	2,2	1	400	24	15	920	620x400x410	45
5195001	CENTRAL-3	3	2,2	3	400	24	15	1135	620x400x410	45
5205001	CENTRAL-4	4	3	3	590	35,4	15	910	820x480x550	77
5215001	CENTRAL-5,5	5,5	4	3	780	46,8	15	1085	820x480x550	80
5225001	CENTRAL-7,5	7,5	5,5	3	1010	60,6	15	795	1020x570x740	142
5225005	CENTRAL-7,5/A*	7,5	5,5	3	1010	60,6	15	795	1020x640x740	150
5235001	CENTRAL-10	10	7,5	3	1400	84	15	1125	1020x570x740	150
5235005	CENTRAL-10/A*	10	7,5	3	1400	84	15	1125	1020x640x740	158
5255005	CENTRAL-15/A*	15	11	3	2020	121,2	15	840	1110x740x780	220
5265005	CENTRAL-20/A*	20	15	3	2770	166,2	15	1125	1110x740x780	231

*A: star delta start (Y-Δ)

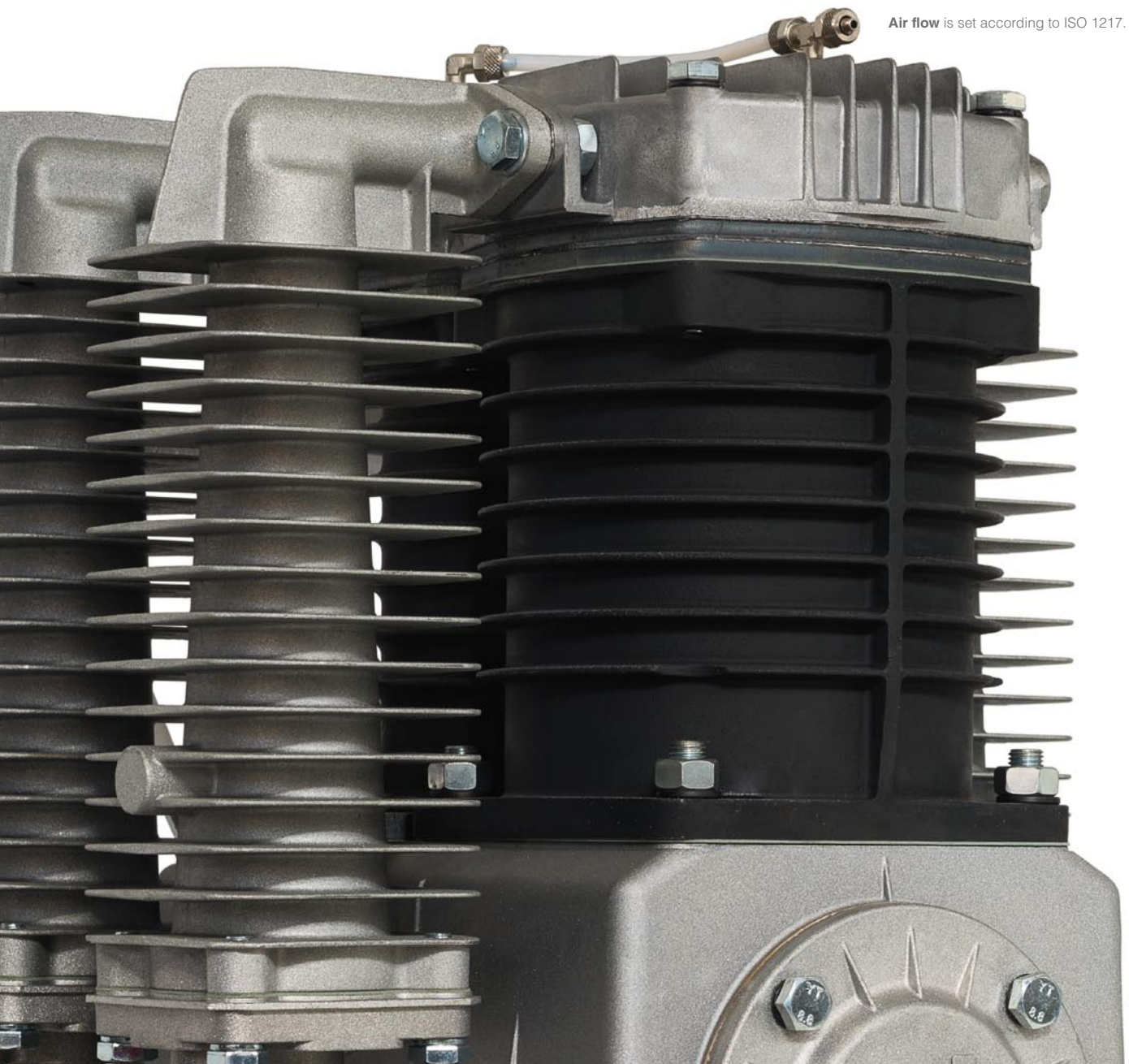
Compressors, whose maximum working pressure is 10 bar, are preset with a minimum standard pressure of 6 bar and maximum of 8 bar.
Compressors, whose maximum working pressure is 15 bar, are preset with a minimum standard pressure of 10 bar and maximum of 12 bar.

HEADS

Features CLASSIC Series

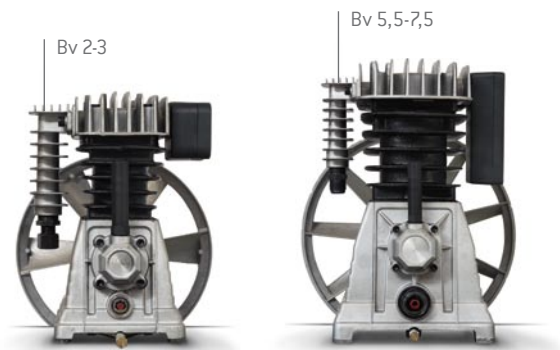
- Cast iron CYLINDER of superior strength that prolongs its life and its performance.
- Oversized FINS for best cooling.
- Ductile CRANKSHAFT casting with double support for greater stability and dynamic balance.
- VALVE PLATE of stainless steel reeds, with increased resistance to the temperatures and corrosion while providing a greater flow rate.
- CONNECTING RODS in one piece, mounted on needle bearings to ensure lower friction, higher performance and less vibrations.
- Die-cast aluminum CRANKCASE for better thermal evacuation.
- Oversized FAN PULLEY for optimal cooling of the head.

Air flow is set according to ISO 1217.



Features CIERZO Series

- Cast iron CYLINDER that extends its useful life and its performance.
- Oversized FINS for best cooling.
- Ductile CRANKSHAFT casting with double support for greater stability.
- REED VALVES with multiple steps of air that provide a greater flow.
- Oversized FAN PULLEY for optimum cooling of the head.
- High efficiency AIR FILTER.
- Operation at low R.P.M. with low level of noise.



CIERZO SERIES



Code	Model	HP	Kw	l/m	m ³ /h	bar	r.p.m.	LxWxH mm	Kg.
5607182	Bv-2	2	1,5	280	16,8	10	1020 *	320x275x340	10
5607192	Bv-3	3	2,2	330	19,8	10	1020 *	320x275x340	11
5607212	Bv-5,5	5,5	4	600	36	10	900 *	380x370x450	24
5607222	Bv-7,5	7,5	5,5	900	54	10	900 *	380x370x450	25

* Recommended r.p.m.



CLASSIC SERIES



Code	Model	HP	Kw	l/m	m ³ /h	bar	r.p.m.	LxWxH mm	Kg.
5601173	BCL-55/60	2	1,5	310	18,6	10	920 *	275x195x320	14
5602193	CL2E/2-3	3	2,2	400	24	15	1135 *	300x250x400	19
5602202	CL2E/4-5,5	4	3	590	35,4	15	910 *	350x300x500	30
		5,5	4	780	46,8		1085 *		
5602203	CL2E/4-5,5P	4	3	590	35,4	15	910 *	350x300x500	30
		5,5	4	780	46,8		1085 *		
5602282	CL2E/7,5-10	7,5	5,5	1010	60,6	15	795 *	430x570x530	54
		10	7,5	1400	84		1125 *		
5602285	CL2E/7,5-10P	7,5	5,5	1010	60,6	15	795 *	430x570x530	54
		10	7,5	1400	84		1125 *		
5602307	CL2E/15-20P	15	11	2020	121,2	15	840 *	500x700x750	86
		20	15	2770	166,2		1125 *		

In case of needing a head for a soundproof compressor, please indicate when placing an order.

* Recommended r.p.m.

AQUATIC

series

AQUATIC series breathing air compressors are compact and lightweight. Very easy to use, robust and highly resistant to corrosion, these are specially designed for mining, firefighting, scuba diving, and for clubs or independent divers, for example.

Air flow is set according to ISO 1217.

Noise level as CAGI PNEUROP-measured in the open air, at a distance of 1 meter.



Features:

- Compressor autonomous.
- Compact, lightweight and portable - Easy to use.
- Very corrosion resistant.
- ATL System air purification.
- Breathable air according to regulations:
UNI EN 12021:2000 - ANSI/CGA E - Z180.



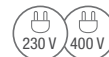
SINGLE PHASE



Code	Model	bar	HP	Kw	l/min	m ³ /h	r.p.m.	dB [A]	LxWxH mm	Kg.
5093000	AQUATIC 100M	330	3	2,2	100	6	2100	79	580x410x410	42,5
5093001	AQUATIC 100M/A*	330	3	2,2	100	6	2100	79	580x410x410	42,5

*A: automatic switch on/off

THREE PHASE



Code	Model	bar	HP	Kw	l/min	m ³ /h	r.p.m.	dB [A]	LxWxH mm	Kg.
5203000	AQUATIC 100	330	4	3	100	6	2100	79	580x410x410	42
5203001	AQUATIC 100/A*	330	4	3	100	6	2100	79	580x410x410	42

*A: automatic switch on/off

OTHER MODELS AVAILABLE:

- 225 bar version.
- Double pressure version (two filling devices, 225 and 330 bar).
- Trolley version.



AQUATIC 100G

PETROL

Code	Model	bar	HP	Kw	l/min	m ³ /h	r.p.m.	dB [A]	LxWxH mm	Kg.
5217000	AQUATIC 100G	330	6	4,4	100	6	2100	84	580x410x410	42
5217001	AQUATIC 100G/A*	330	6	4,4	100	6	2100	84	580x410x410	42

*A: automatic switch on/off

SOUNDPROOFED



PISTON

compressors

Compresores JOSVAL differs from other manufacturers by offering the widest range of soundproofed piston compressors in the WORLD, finding solutions where other companies fail to do so, making our compressors suitable for high-performance work in 20 HP.

Our specialty -reliable, aesthetically appealing, efficient compressors- are free of complications and are very inexpensive to maintain, while producing the air required for offices, workshops, and small and medium industries who need soundproof, affordable solutions.

SAUBER series

BRISA / BRISA PLUS series

4UATTRO series

MONCAYO series



SAUBER

series

Oil-free compressors, designed to withstand high rhythms of work, have very low maintenance costs.

These are aimed at small businesses that require very clean air. For dental markets, the model also incorporates an adsorption dryer.



Features

- Compressor SINGLE PHASE and SOUNDPROOFED.
- WITHOUT OIL - CLEAN and DRY air. Economic maintenance.
- Bicilyndric head ceramic coated, great production, reliable, compact and robust.
- Electric motor for low power consumption and high performance. S1 service.
- Dual electric fan heat evacuation.
- Air tank treated and painted sanitary white.

- FILTRATION SET with built-in automatic drain (0,01 micron).
- Adsorption DRYER of high efficiency, which absorbs moisture and ensures dry air.

Only in model
SAUBER 240-D

Tanks are manufactured according to EU directives 2009/105/EC and 97/23/EC.

Air flow is set according to ISO 1217.

Noise level as CAGI PNEUROP-measured in the open air, at a distance of 1 meter.



SAUBER 240



SAUBER 240-D

SAUBER SERIES



Code	Model	HP	Kw	Ph	Lts	Cyl./St.	l/m	m ³ /h	r.p.m.	dB [A]	LxWxH mm	Kg.
5088151	SAUBER 240	2	1,5	1	50	2/1	240	14,4	1400	56	740x465x970	110
5088155	SAUBER 240-D	2	1,5	1	50	2/1	240	14,4	1400	56	740x465x970	120



Air flow is set according to ISO 1217.

Noise level as CAGI PNEUROP-measured in the open air, at a distance of 1 meter.



COMPRESORES JOSVAL

BRISA and BRISA PLUS

series

The BRISA series of soundproofed compressors provides easy mounting and installation. Simply plug in and operate. These require low maintenance and are ideal for urban areas where noise can be an inconvenience to neighbors, or in areas where you don't have a specific site for the compressor and noise can be a problem.



BRISA and BRISA PLUS series

- CLASSIC series head.
- Oversized FAN PULLEY for optimal cooling of the head.
- ELECTRIC MOTOR low power consumption and high performance. Service S1.
- AIR TANK of 100 liters capacity (50 liters models up to 3 HP).
- Economic maintenance.
- PLUG & PLAY, simple installation, plug in and operate.
- Special ANTIVIBRATION rubbers.
- FAN for heat evacuation.
- Analog HOURMETER.
- RELAY of direction of rotation.
- Condensation DRAIN.
- AFTERCOOLER for optimal ventilation of the compressor.
- Maintenance LED (models of 4 and 5,5 HP).
- Oil-less indicator LED (models of 4 and 5,5 HP).

Only
BRISA PLUS
series

Tanks are manufactured according to EU directives 2009/105/EC and 97/23/EC.

In the case of a complete installation of a compressor with air treatment, the system would consist of BRISA PLUS compressor, refrigerant dryer series EDS (or REDE if BRISA series) and particle separator filter series FEP.

Air flow is set according to ISO 1217.

Noise level as CAGI PNEUROP-measured in the open air, at a distance of 1 meter.

BRISA SERIES



Code	Model	HP	Kw	Ph	Lts	Cyl./St.	l/m	m ³ /h	r.p.m.	dB [A]	LxWxH mm	Kg
5088141	BRISA 310M	2	1,5	1	50	2/1	310	18,6	920	61	740x465x970	112
5188143	BRISA 310	2	1,5	3	50	2/1	310	18,6	1135	61	740x465x970	112
5098141	BRISA 400M	3	2,2	1	50	2/2	400	24	920	65	740x465x970	127
5198143	BRISA 400	3	2,2	3	50	2/2	400	24	1135	65	740x465x970	116



BRISA 310



BRISA 310 PLUS



BRISA PLUS SERIES

10 BAR



Code	Model	HP	Kw	Ph	Lts	Cyl./St.	l/m	m ³ /h	r.p.m.	dB [A]	LxWxH mm	Kg.
5088144	BRISA 310M PLUS	2	1,5	1	50	2/1	310	18,6	920	61	740x465x970	112
5188145	BRISA 310 PLUS	2	1,5	3	50	2/1	310	18,6	1135	61	740x465x970	112
5198145	BRISA 400 PLUS	3	2,2	3	50	2/2	400	24	1135	65	740x465x970	116

15 BAR



Code	Model	HP	Kw	Ph	Lts	Cyl./St.	l/m	m ³ /h	r.p.m.	dB [A]	mm	Kg.
5208173	BRISA 590 PLUS	4	3	3	100	2/2	590	35,4	910	64	1020x705x1185	174
5218173	BRISA 780 PLUS	5,5	4	3	100	2/2	780	46,8	1085	64	1020x705x1185	180

Compressors, whose maximum working pressure is 10 bar, are preset with a minimum standard pressure of 6 bar and maximum of 8 bar.
Compressors, whose maximum working pressure is 15 bar, are preset with a minimum standard pressure of 10 bar and maximum of 12 bar.

4UATTRO

series

Taking advantage of a lifetime of the concepts and experience, Compresores JOSVAL offers with the 4UATTRO series a creative and functional solution for those instances when there is a need for a very low noise level and/or in a small space. With a range that goes from 3 up to 10 HP, this is the more versatile autonomous station of our catalog.

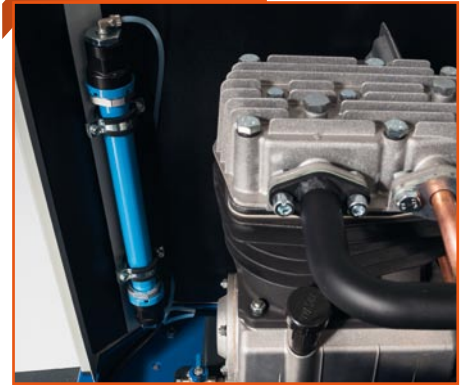


Features

- Compressor production large, reliable, compact and robust.
- Easy access. Economic maintenance.
- Electric motor low power consumption and high performance. Service S1.
- Control relay of direction of rotation.
- Double thermal heater fan of evacuation (triple fan models in 7,5-10 HP CLASSIC series).
- Alarm Indicator light for control of direction of rotation and dysfunction of fans.
- Thermostatic sensor for the fan control.
- Analog hourmeter of work.
- Line piping connections of PTFE.
- Soft starter (models 7,5-10 HP CLASSIC series).
- Pipe pressure monitoring (without tank models).
- Three versions available: with tank, with and dryer, and without tank.

Air flow is set according to ISO 1217.

Noise level as CAGI PNEUROP-measured in the open air, at a distance of 1 meter.



Pipe pressure monitoring optional
Easy connection to air net

Tanks are manufactured according to EU directives 2009/105/EC and 97/23/EC.





4UATTRO SERIES

CIERZO HEAD



Code	Model	HP	Kw	Ph	Lts	Cyl./St.	l/m	m ³ /h	r.p.m.	dB [A]	LxWxH mm	Kg.
5198043	4UATTRO C3	3	2,2	3	-	2/1	330	19,8	1020	63	655x530x660	75
5198283	4UATTRO C3/150	3	2,2	3	150	2/1	330	19,8	1020	63	950x530x1210	117
5218043	4UATTRO C5,5	5,5	4	3	-	2/1	600	36	900	65	855x653x730	150
5218243	4UATTRO C5,5/270	5,5	4	3	270	2/1	600	36	900	65	1170x653x1370	230
5228043	4UATTRO C7,5	7,5	5,5	3	-	2/1	900	54	900	68	855x653x730	153
5228243	4UATTRO C7,5/270	7,5	5,5	3	270	2/1	900	54	900	68	1170x653x1370	233

CLASSIC HEAD



Code	Model	HP	Kw	Ph	Lts	Cyl./St.	l/m	m ³ /h	r.p.m.	dB [A]	mm	Kg.
5198041	4UATTRO 3	3	2,2	3	-	2/2	400	24	1135	65	655x530x660	83
5198281	4UATTRO 3/150	3	2,2	3	150	2/2	400	24	1135	65	950x530x1210	125
5218041	4UATTRO 5,5	5,5	4	3	-	2/2	780	46,8	1085	67	855x653x730	160
5218241	4UATTRO 5,5/270	5,5	4	3	270	2/2	780	46,8	1085	67	1170x653x1370	240
5228047	4UATTRO 7,5 AS*	7,5	5,5	3	-	2/2	1010	60,6	795	69	885x700x900	191
5228217	4UATTRO 7,5/500 AS*	7,5	5,5	3	500	2/2	1010	60,6	795	69	1930x700x1480	431
5238047	4UATTRO 10 AS*	10	7,5	3	-	2/2	1400	84	1125	70	885x700x900	200
5238217	4UATTRO 10/500 AS*	10	7,5	3	500	2/2	1400	84	1125	70	1930x700x1480	440

*AS: Soft starter



4UATTRO -EDS- SERIES (WITH DRYER)

CIERZO HEAD



Code	Model	HP	Kw	Ph	Lts	Cyl./St.	l/m	m ³ /h	r.p.m.	dB [A]	LxWxH mm	Kg.
5218213	4UATTRO C5,5/500 -EDS-	5,5	4	3	500	2/1	600	36	900	65	1930x653x1370	297
5228213	4UATTRO C7,5/500 -EDS-	7,5	5,5	3	500	2/1	900	54	900	68	1930x653x1370	300

CLASSIC HEAD



Code	Model	HP	Kw	Ph	Lts	Cyl./St.	l/m	m ³ /h	r.p.m.	dB [A]	LxWxH mm	Kg.
5218219	4UATTRO 5,5/500 -EDS-	5,5	4	3	500	2/2	780	46,8	1085	67	1930x653x1370	307
5228219	4UATTRO 7,5/500 AS* -EDS-	7,5	5,5	3	500	2/2	1010	60,6	795	69	1930x653x1370	457
5238219	4UATTRO 10/500 AS* -EDS-	10	7,5	3	500	2/2	1400	84	1125	70	1930x700x1480	466

*AS: Soft starter

MONCAYO

series

MONCAYO series is designed for the most demanding clients, those who value making a greater investment to obtain the maximum benefit and who are committed to the highest technology in soundproofed piston compressors.

We offer models ranging from 4 up to 20 HP. Without a doubt, they are the most prestigious soundproofed piston compressors with the highest benefits (head of the CLASSIC series, electronic board multifunction control, aftercooler, etc.).

Features

- Compressor of great production, reliable and robust.
- Air pump of the CLASSIC Series.
- Aftercooler.
- Electric motor low power consumption and high performance. Service S1.
- Control relay of direction of rotation.
- Electronic display that controls the following parameters:
 - Analog hour meter.
 - Alarm indicator.
 - Maintenance indicator.
 - Electric overload indicator.
 - Oil-less indicator (from 7,5 HP on).
- Easy and quick access system of doors.
- Insulation panels with a high degree of soundproofing.
- Electric fan heat evacuation.
- Emergency stop button (from 7,5 HP on).

AVAILABILITY OF SPECIAL ANTI-DUST FILTERS

(quarries, cement, etc.)

See price depending on model.



In case of complete installation of a compressor with air treatment, you will need a MONCAYO compressor, air tank, refrigeration dryer series EDS with bypass and particle separator filter series FEP.



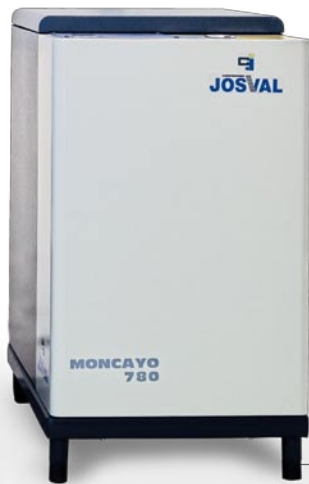
MONCAYO 1400/A

MONCAYO SERIES



Code	Model	HP	Kw	Ph	Lts	Cyl./St.	l/m	m ³ /h	r.p.m.	dB [A]	LxWxH mm	Kg.
5208023	MONCAYO 590	4	3	3	-	2/2	590	35,4	910	63	770x565x1010	125
5218023	MONCAYO 780	5,5	4	3	-	2/2	780	46,8	1085	63	770x565x1010	131
5228025	MONCAYO 1010/A*	7,5	5,5	3	-	2/2	1010	60,6	795	64	830x690x1150	180
5238025	MONCAYO 1400/A*	10	7,5	3	-	2/2	1400	84	1125	64	830x690x1150	187
5258025	MONCAYO 2020/A*	15	11	3	-	2/2	2020	121,2	840	65	1160x815x1190	407
5268025	MONCAYO 2770/A*	20	15	3	-	2/2	2770	166,2	1125	65	1160x815x1190	414

*A: star delta start (Y-Δ)



MONCAYO 780



Air flow is set according to ISO 1217.

Noise level as CAGI PNEUROP-measured in the open air, at a distance of 1 meter.

MONCAYO SET

Code	Model
5216198	MONCAYO Set 780 + Vertical tank 270 liters 11 bar + Dryer EDS-900 + Filter FEP-1200 + (2x) Connection hoses
5236198	MONCAYO Set 1400/A + Vertical tank 270 liters 11 bar + Dryer EDS-1800 + Filter FEP-1800 + (2x) Connection hoses
5256218	MONCAYO Set 2020/A + Vertical tank 500 liters 11 bar + Dryer EDS-2400 + Filter FEP-3000 + (2x) Connection hoses
5266218	MONCAYO Set 2770/A + Vertical tank 500 liters 11 bar + Dryer EDS-3000 + Filter FEP-3000 + (2x) Connection hoses

By-pass included

Compressors, whose maximum working pressure is 15 bar, are preset with a minimum standard pressure of 10 bar and maximum of 12 bar.



SCREW

compressors

With over 30 years of experience manufacturing our soundproof rotary compressors, if anything defines the new generation of JOSVAL's screw compressors, it is robustness and reliability. Without a doubt it is the best investment for those businesses or companies that require a continuous air flow.

They offer a higher performance with respect to piston compressors, are quieter, more durable and are inexpensive to maintain.

PRACTIKO series _____

TECONROT series _____

MISTRAL series _____

GRAFENO series _____

PRACTIKO

series

Reliable, durable, efficient, and eliminating superfluous to its cost and value, really go together. PRACTIKO, the new range incorporating everything requested by our customers.

PRACTIKO compressor is very easy to install and save money immediately reducing operating costs. Designed and developed to fulfill the targets that the market currently demands.

Features

- Screw compressor production large, reliable, compact and robust.
- Easy access. Economic maintenance.
- Low R.P.M.
- Star delta start (optional).
- Inlet valve with solenoid valve.
- Temperature probe.
- Electronic board control which incorporates:
 - Motor protection system integrated (block, short-circuit, phase sequence, phase failure, voltage unbalance and motor overload).
 - Control relay of direction of rotation.
 - Temperature indicator.
- Special antivibration rubbers.
- Three versions available: with tank, with tank and dryer, and without tank.



Air flow is set according to ISO 1217.

Noise level as CAGI PNEUROP-measured in the open air, at a distance of 1 meter.



PRACTIKO SERIES (WITHOUT TANK)



Code	Model	HP	Kw	Lts	l/m	m ³ /h	bar	dB [A]	BSP	LxWxH mm	Kg
5210015	PRACTIKO 5,5	5,5	4	-	530	31,8	10	80	3/4"	950x450x770	170
5210011	PRACTIKO 5,5/A*	5,5	4	-	530	31,8	10	80	3/4"	950x450x770	170
5220015	PRACTIKO 7,5	7,5	5,5	-	820	49,2	10	80	3/4"	950x450x770	175
5220011	PRACTIKO 7,5/A*	7,5	5,5	-	820	49,2	10	80	3/4"	950x450x770	175
5230015	PRACTIKO 10	10	7,5	-	1250	75	10	81	3/4"	1000x540x820	230
5230011	PRACTIKO 10/A*	10	7,5	-	1250	75	10	81	3/4"	1000x540x820	230
5250015	PRACTIKO 15	15	11	-	1850	111	10	82	3/4"	1050x540x820	250
5250011	PRACTIKO 15/A*	15	11	-	1850	111	10	82	3/4"	1050x540x820	250

*A: star delta start (Y-Δ)

PRACTIKO SERIES (WITH TANK)

Code	Model	HP	Kw	Lts	l/m	m ³ /h	bar	dB [A]	BSP	mm	Kg
5210243	PRACTIKO 5,5-270	5,5	4	270	530	31,8	10	80	1/2"	1200x600x1400	250
5210241	PRACTIKO 5,5-270/A*	5,5	4	270	530	31,8	10	80	1/2"	1200x600x1400	250
5220243	PRACTIKO 7,5-270	7,5	5,5	270	820	49,2	10	80	1/2"	1200x600x1400	255
5220241	PRACTIKO 7,5-270/A*	7,5	5,5	270	820	49,2	10	80	1/2"	1200x600x1400	255
5230243	PRACTIKO 10-270	10	7,5	270	1250	75	10	81	1/2"	1200x600x1450	310
5230241	PRACTIKO 10-270/A*	10	7,5	270	1250	75	10	81	1/2"	1200x600x1450	310
5250243	PRACTIKO 15-270	15	11	270	1850	111	10	82	1/2"	1200x600x1450	330
5250241	PRACTIKO 15-270/A*	15	11	270	1850	111	10	82	1/2"	1200x600x1450	330

*A: star delta start (Y-Δ)

PRACTIKO SERIES (WITH TANK + BUILT-IN DRYER)

Code	Model	HP	Kw	Lts	l/m	m ³ /h	bar	dB [A]	BSP	mm	Kg
5210219	PRACTIKO 5,5-500 -EDS-	5,5	4	500	530	31,8	10	80	1/2"	1930x600x1400	310
5210211	PRACTIKO 5,5-500/A* -EDS-	5,5	4	500	530	31,8	10	80	1/2"	1930x600x1400	310
5220219	PRACTIKO 7,5-500 -EDS-	7,5	5,5	500	820	49,2	10	80	1/2"	1930x600x1400	315
5220211	PRACTIKO 7,5-500/A* -EDS-	7,5	5,5	500	820	49,2	10	80	1/2"	1930x600x1400	315
5230219	PRACTIKO 10-500 -EDS-	10	7,5	500	1250	75	10	81	1/2"	1930x600x1450	370
5230211	PRACTIKO 10-500/A* -EDS-	10	7,5	500	1250	75	10	81	1/2"	1930x600x1450	370
5250219	PRACTIKO 15-500 -EDS-	15	11	500	1850	111	10	82	1/2"	1930x600x1450	390
5250211	PRACTIKO 15-500/A* -EDS-	15	11	500	1850	111	10	82	1/2"	1930x600x1450	390

*A: star delta start (Y-Δ)

TECONROT

series

The new TECONROT series integrates all of the necessary equipment for a screw compressor such as a tank and refrigerant dryer. All components are connected in a compact manner.

This makes it ready to be installed by the user, without the need for technical staff installation.



Air flow is set according to ISO 1217.

Noise level as CAGI PNEUROP-measured in the open air, at a distance of 1 meter.

Features

- Screw compressor, COMPACT and QUIET.
- CONTROL DISPLAY.
- Built-in refrigerant DRYER low-consumption.
- Integrated AIR TANK.

Only
TECONROT
series

TECONROT 7-SyS



TECONROT SyS SERIES



Code	Model	HP	Kw	Lts	l/m	m ³ /h	bar	dB [A]	BSP	LxWxH mm	Kg
5220007	TECONROT 7-SyS	7,5	5,5	-	705	42,3	10	68	1/2"	650x580x800	103
5230007	TECONROT 10-SyS	10	7,5	-	1050	63	10	67	1/2"	650x580x800	113



TECONROT 15-20/500



TECONROT 10-500

Tanks are manufactured according to EU directives 2009/105/EC and 97/23/EC. Soundproofed screw compressors with a horizontal tank and a refrigeration dryer incorporated.

COMPRESORES **JOSVAL**

TECONROT SERIES (WITH TANK + BUILT-IN DRYER)



Code	Model	HP	Kw	Lts	l/m	m ³ /h	bar	dB [A]	BSP	LxWxH mm	Kg
5190245	TECONROT 3-200	3	2,2	200	290	17,4	10	58	1/2"	1440x510x1280	175
5210245	TECONROT 5-200	5,5	4	200	485	29,1	10	60	1/2"	1440x510x1280	182
5220247	TECONROT 7-270	7,5	5,5	270	705	42,3	10	68	1/2"	1200x600x1500	211
5230217	TECONROT 10-500	10	7,5	500	1050	63	10	67	1/2"	2000x600x1500	279
5250217	TECONROT 15-500	15	11	500	1550	93	10	69	3/4"	2000x700x1530	407
5260217	TECONROT 20-500	20	15	500	2050	123	10	68	3/4"	2000x700x1530	425

MISTRAL

series

With a range of powers from 7,5 up to 60 HP, the screw compressors of the MISTRAL series are the smart solution to any company's need for compressed air.



Rotary compressors of the MISTRAL series, incorporate an airend of one stage with asymmetric screws mounted on bearings. Its operation is carried out by a three phase electric motor with asynchronous protection IP 55, energy saving IE2, F isolated, through V-belts. This transmission system offers high reliability and low noise level.



The control panel, governed by the electronic display, informs you about status of the compressor (operating temperature, hours of work, maintenance interval, existing pressure, mode of operation, etc.) and start/stop functions.



Features

- Large compressor production, reliable, compact and robust.
- Quick and easy access. Economic maintenance.
- Electric motor IE2 high-performance, low-power. Service S1.
- Soft starter (optional).
- Inverter (optional).
- Electronic board control which incorporates:
 - Start and stop button pads.
 - Programming button pads.
 - On/off light indicator.
 - Maintenance indicator.
 - Temperature indicator.

AVAILABILITY OF SPECIAL ANTI-DUST FILTERS

(quarries, cement, etc.)

See price depending on model.



Air flow is set according to ISO 1217.

Noise level as CAGI PNEUROP-measured in the open air, at a distance of 1 meter.

STAR DELTA START (Y-Δ)



Code	Model	Motor		Flow		bar	dB [A]	BSP	LxWxH mm	Kg
		HP	Kw	l/m	m ³ /h					
5220714	MISTRAL 7,5-A			927	55,6	8				
5220715	MISTRAL 7,5-B	7,5	5,5	790	47,4	10	63	½"	1060x690x1050	232
5220716	MISTRAL 7,5-C			648	38,9	13				
5230714	MISTRAL 10-A			1337	80,2	8				
5230715	MISTRAL 10-B	10	7,5	1117	67	10	65	½"	1060x690x1050	238
5230716	MISTRAL 10-C			913	54,8	13				
5250714	MISTRAL 15-A			1811	108,7	8				
5250715	MISTRAL 15-B	15	11	1564	93,8	10	68	½"	1060x690x1050	256
5250716	MISTRAL 15-C			1325	79,5	13				
5260724	MISTRAL 20-A			2500	150	8				
5260725	MISTRAL 20-B	20	15	2262	135,7	10	70	¾"	1310x850x1235	529
5260726	MISTRAL 20-C			1923	115,4	13				
5270724	MISTRAL 25-A			3214	192,8	8				
5270725	MISTRAL 25-B	25	19	2850	171	10	72	¾"	1310x850x1235	538
5270726	MISTRAL 25-C			2500	150	13				
5300724	MISTRAL 30-A			3505	210,3	8				
5300725	MISTRAL 30-B	30	22	3333	200	10	73	¾"	1310x850x1235	567
5300726	MISTRAL 30-C			2880	172,8	13				
5310734	MISTRAL 40-A			4827	289,6	8				
5310735	MISTRAL 40-B	40	30	4325	259,5	10	74	1"	1530x900x1305	692
5310736	MISTRAL 40-C			3850	231	13				
5320744	MISTRAL 50-A			5978	358,7	8				
5320745	MISTRAL 50-B	50	37	5528	331,7	10	75	1"	1530x900x1305	715
5320746	MISTRAL 50-C			4713	282,8	13				

SOFT STARTER - AS

System startup by soft-start of the electric motor, provides considerable savings on your electricity consumption by eliminating the peaks of intensity produced in the boot, and in turn, extends the life of the transmission elements of the compressor.

FEATURES:

- Motor protection system integrated (phase sequence, phase failure, motor overload, etc.).
- Enabling code which allows locking the equipment up for handling.
- Local/remote monitoring (power range, amperage, etc.).
- Report of system performance (failures, alarms, etc.).

BENEFITS:

- Soft starter devices provide low mechanical stress without sudden stops.
- Electricity rate reduction.



SOFT STARTER - AS



Code	Model	HP	Kw	l/m	m ³ /h	bar	dB [A]	BSP	LxWxH mm	Kg
5220814	MISTRAL 7,5-A AS			927	55,6	8				
5220815	MISTRAL 7,5-B AS	7,5	5,5	790	47,4	10	63	1/2"	1060x690x1050	232
5220816	MISTRAL 7,5-C AS			648	38,9	13				
5230814	MISTRAL 10-A AS			1337	80,2	8				
5230815	MISTRAL 10-B AS	10	7,5	1117	67	10	65	1/2"	1060x690x1050	238
5230816	MISTRAL 10-C AS			913	54,8	13				
5250814	MISTRAL 15-A AS			1811	108,7	8				
5250815	MISTRAL 15-B AS	15	11	1564	93,8	10	68	1/2"	1060x690x1050	256
5250816	MISTRAL 15-C AS			1325	79,5	13				
5260824	MISTRAL 20-A AS			2500	150	8				
5260825	MISTRAL 20-B AS	20	15	2262	135,7	10	70	3/4"	1310x850x1235	529
5260826	MISTRAL 20-C AS			1923	115,4	13				
5270824	MISTRAL 25-A AS			3214	192,8	8				
5270825	MISTRAL 25-B AS	25	19	2850	171	10	72	3/4"	1310x850x1235	538
5270826	MISTRAL 25-C AS			2500	150	13				
5300824	MISTRAL 30-A AS			3505	210,3	8				
5300825	MISTRAL 30-B AS	30	22	3333	200	10	73	3/4"	1310x850x1235	567
5300826	MISTRAL 30-C AS			2880	172,8	13				
5310834	MISTRAL 40-A AS			4827	289,6	8				
5310835	MISTRAL 40-B AS	40	30	4325	259,5	10	74	1"	1530x900x1305	692
5310836	MISTRAL 40-C AS			3850	231	13				
5320844	MISTRAL 50-A AS			5978	358,7	8				
5320845	MISTRAL 50-B AS	50	37	5528	331,7	10	75	1"	1530x900x1305	715
5320846	MISTRAL 50-C AS			4713	282,8	13				
5330844	MISTRAL 60-A AS			6974	418,4	8				
5330845	MISTRAL 60-B AS	60	45	6575	394,5	10	77	1 1/2"	1600x900x1305	740
5330846	MISTRAL 60-C AS			5780	346,8	13				

Always thinking of facilitating the work of the maintenance technicians, this canopy system is quickly and easily removable, thus giving simple, comfortable and complete access to all the elements of the compressor. All connections that circulate the air and oil are made with oversized piping systems. Its closure nuts get a bevel adjustment and perfect hermeticity.



In case of complete installation of a compressor with air treatment, you will need a MISTRAL compressor, air tank, refrigeration dryer series EDS with by-pass and particle separator filter series FEP.

MISTRAL SET - AS



Code	Model
5226895	MISTRAL Set 7,5-B AS + Vertical tank 270 liters 11 bar + Dryer EDS-900 + Filter FEP-1200 + (2x) Connection hoses
5236895	MISTRAL Set 10-B AS + Vertical tank 270 liters 11 bar + Dryer EDS-1800 + Filter FEP-1200 + (2x) Connection hoses
5256815	MISTRAL Set 15-B AS + Vertical tank 500 liters 11 bar + Dryer EDS-1800 + Filter FEP-1800 + (2x) Connection hoses
5266815	MISTRAL Set 20-B AS + Vertical tank 500 liters 11 bar + Dryer EDS-2400 + Filter FEP-3000 + (2x) Connection hoses
5276815	MISTRAL Set 25-B AS + Vertical tank 500 liters 11 bar + Dryer EDS-3000 + Filter FEP-3000 + (2x) Connection hoses
5306855	MISTRAL Set 30-B AS + Vertical tank 1000 liters 11 bar + Dryer EDS-4700 + Filter FEP-3400 + (2x) Connection hoses
5316855	MISTRAL Set 40-B AS + Vertical tank 1000 liters 11 bar + Dryer EDS-4700 + Filter FEP-5000 + (2x) Connection hoses
5326855	MISTRAL Set 50-B AS + Vertical tank 1000 liters 11 bar + Dryer EDS-5700 + Filter FEP-7200 + (2x) Connection hoses
5336865	MISTRAL Set 60-B AS + Vertical tank 2000 liters 11 bar + Dryer EDS-8000 + Filter FEP-7200 + (2x) Connection hoses

By-pass included

INVERTER - VV

Controlled through an electronic board, INVERTERS devices allow to modulate power that is supplied to the engine. They allow progressive soft starting without breaks. You will get great savings of electricity consumption by making the engine vary your workload on the basis of the actual demand of air in each moment.



FEATURES:

- Motor protection system integrated (phase sequence, phase failure, motor overload, etc.).
- RFI suppression filter.
- Reduction of harmonic disturbances in networks up to 30%.
- Enabling code which allows locking the equipment up for handling.
- Local/remote monitoring (power range, amperage, etc.).
- Report of system performance (failures, alarms, etc.).

BENEFITS:

- Energy saving by matching the compressor output to the pressure demand.
- Inverter devices provide low mechanical stress without sudden stops.
- Electricity rate reduction.

INVERTER



Code	Model	HP	Kw	l/m	m ³ /h	bar	dB [A]	BSP	LxWxH mm	Kg
5220914	MISTRAL 7,5-A VV			927-417,1	55,6-25	8				
5220915	MISTRAL 7,5-B VV	7,5	5,5	790-355,5	47,4-21,3	10	63	½"	1060x690x1050	232
5220916	MISTRAL 7,5-C VV			648-291,6	38,9-17,5	13				
5230914	MISTRAL 10-A VV			1337-601,6	80,2-36	8				
5230915	MISTRAL 10-B VV	10	7,5	1117-502,6	67-30,1	10	65	½"	1060x690x1050	238
5230916	MISTRAL 10-C VV			913-410,8	54,8-24,6	13				
5250914	MISTRAL 15-A VV			1811-814,9	108,7-48,9	8				
5250915	MISTRAL 15-B VV	15	11	1564-703,8	93,8-42,2	10	68	½"	1060x690x1050	256
5250916	MISTRAL 15-C VV			1325-596,2	79,5-35,7	13				
5260924	MISTRAL 20-A VV			2500-1125	150-67,5	8				
5260925	MISTRAL 20-B VV	20	15	2262-1017,9	135,7-61	10	70	¾"	1310x850x1235	529
5260926	MISTRAL 20-C VV			1923-865,3	115,4-51,9	13				
5270924	MISTRAL 25-A VV			3214-1446,3	192,8-86,7	8				
5270925	MISTRAL 25-B VV	25	19	2850-1282,5	171-76,9	10	72	¾"	1310x850x1235	538
5270926	MISTRAL 25-C VV			2500-1125	150-67,5	13				
5300924	MISTRAL 30-A VV			3505-1577,2	210,3-94,6	8				
5300925	MISTRAL 30-B VV	30	22	3333-1499,8	200-90	10	73	¾"	1310x850x1235	567
5300926	MISTRAL 30-C VV			2880-1296	172,8-77,7	13				
5310934	MISTRAL 40-A VV			4827-2172,1	289,6-130,3	8				
5310935	MISTRAL 40-B VV	40	30	4325-1946,2	259,5-116,7	10	74	1"	1530x900x1305	692
5310936	MISTRAL 40-C VV			3850-1732,5	231-103,9	13				
5320944	MISTRAL 50-A VV			5978-2690,1	358,7-161,4	8				
5320945	MISTRAL 50-B VV	50	37	5528-2487,6	331,7-149,2	10	75	1"	1530x900x1305	715
5320946	MISTRAL 50-C VV			4713-2120,8	282,8-127,2	13				
5330944	MISTRAL 60-A VV			6974-3138,3	418,4-188,3	8				
5330945	MISTRAL 60-B VV	60	45	6575-2958,7	394,5-177,5	10	77	1 ½"	1600x900x1305	740
5330946	MISTRAL 60-C VV			5780-2601	346,8-156	13				

For companies who use air, variable air consumption rates make it necessary to adapt the load time of the compressor to the real demands of air usage at each moment. To this end, JOSVAL equips your MISTRAL-VV series with an INVERTER which corrects the revolutions of the electric motor, getting the compressor to generate only the air that is necessary to supply the working points.

GRAFENO

series

Screw compressors are designed and built to deliver high flow rates, maximum efficiency, robustness and reliability. Each component of the compressors in the GRAFENO series has been specifically designed and tested to ensure maximum quality and performance, as well as to ensure easy maintenance.

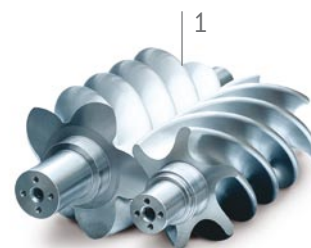
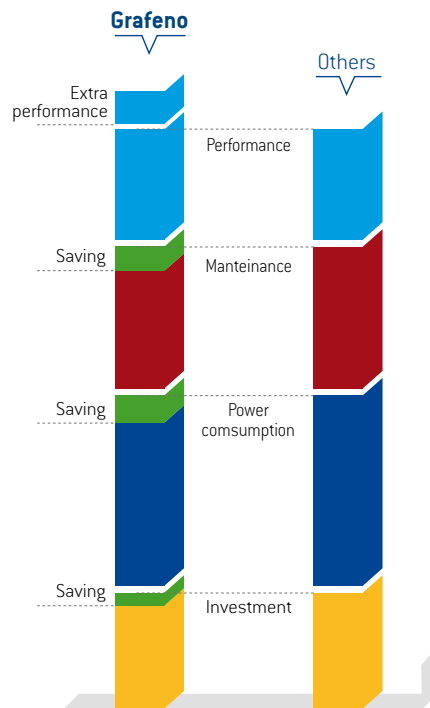


Air flow is set according to ISO 1217.

Noise level as CAGI PNEUROP-measured in the open air, at a distance of 1 meter.

Features

- Oversized screw airend. Last generation profile with 5:6 (designed in USA). (1)
- Direct drive system, without gears or belts.
- Electric motor low power consumption and high efficiency. (2)
- OPTIMA+ soundproofing.
- Continuous system air/oil separator controlled electronically. (3)
- MULTICONTROL function integrated (up to 16 compressors). (4)
- Silent cooling system and efficient filtration. (5)
- Easy access and economic maintenance.
- INVERTER (optional). Variable speed versions available.



**GRAFENO SERIES**

STAR DELTA START (Y-Δ)



Code	Model	HP	Kw	l/m	m ³ /h	bar	dB (A)	BSP	LxWxH mm	Kg
5347754	GRAFENO 75-A			10000	600	8				
5347755	GRAFENO 75-B	75	55	8770	526,2	10	70	1 ½"	2580x1210x1510	1.800
5347756	GRAFENO 75-C			6340	380,4	13				
5357104	GRAFENO 100-A			14180	850,8	8				
5357105	GRAFENO 100-B	100	75	12020	721,2	10	72	DN65	2990x1520x1850	2.500
5357106	GRAFENO 100-C			9800	588	13				
5507124	GRAFENO 125-A			16800	1008	8				
5507125	GRAFENO 125-B	125	90	14800	888	10	72	2"	2560x1520x1820	2.600
5507126	GRAFENO 125-C			11900	714	13				
5517154	GRAFENO 150-A			21550	1293	8				
5517155	GRAFENO 150-B	150	110	18660	1119,6	10	73	DN65	3110x1690x2070	3.600
5517156	GRAFENO 150-C			16470	988,2	13				
5527184	GRAFENO 180-A			24630	1477,8	8				
5527185	GRAFENO 180-B	180	132	21350	1281	10	73	DN65	3110x1690x2070	3.800
5527186	GRAFENO 180-C			18470	1108,2	13				
5547224	GRAFENO 220-A			29350	1761	8				
5547225	GRAFENO 220-B	220	160	25250	1515	10	75	DN80	3410x1760x2140	4.100
5547226	GRAFENO 220-C			21120	1267,2	13				
5557254	GRAFENO 250-A			33560	2013,6	8				
5557255	GRAFENO 250-B	250	185	29220	1753,2	10	75	DN80	3410x1760x2140	4.250
5557256	GRAFENO 250-C			25140	1508,4	10				

For companies who use air, variable air consumption rates make it necessary to adapt the load time of the compressor to the real demands of air usage at each moment. To this end, GRAFENO series may be equipped with an INVERTER, which corrects the revolutions of the electric motor getting the compressor to generate only the air that is necessary to supply the working points.



GRAFENO SERIES
INVERTER



Code	Model	HP	Kw	l/m	m ³ /h	bar	dB (A)	BSP	LxWxH mm	Kg
5349754	GRAFENO 75-A VV			10000-3800	600-228	8				
5349755	GRAFENO 75-B VV	75	55	8770-3160	526,2-189,6	10	70	1 ½"	2580x1210x1510	1.800
5349756	GRAFENO 75-C VV			6340-2180	380,4-130,8	13				
5359104	GRAFENO 100-A VV			14180-5390	850,8-323,4	8				
5359105	GRAFENO 100-B VV	100	75	12020-4330	721,2-259,8	10	72	DN65	2990x1520x1850	2.500
5359106	GRAFENO 100-C VV			9800-3370	588-202,2	13				
5509124	GRAFENO 125-A VV			16800-6380	1008-382,8	8				
5509125	GRAFENO 125-B VV	125	90	14800-5330	888-319,8	10	72	2"	2560x1520x1820	2.600
5509126	GRAFENO 125-C VV			11900-4090	714-245,4	13				
5519154	GRAFENO 150-A VV			21550-8190	1293-491,4	8				
5519155	GRAFENO 150-B VV	150	110	18660-6720	1119,6-403,2	10	73	DN65	3110x1690x2070	3.600
5519156	GRAFENO 150-C VV			16470-5670	988,2-340,2	13				
5529184	GRAFENO 180-A VV			24630-9360	1477,8-561,6	8				
5529185	GRAFENO 180-B VV	180	132	21350-7690	1281-461,4	10	73	DN65	3110x1690x2070	3.800
5529186	GRAFENO 180-C VV			18470-6350	1108,2-381	13				
5549224	GRAFENO 220-A VV			29350-11150	1761-669	8				
5549225	GRAFENO 220-B VV	220	160	25250-9090	1515-545,4	10	75	DN80	3410x1760x2140	4.100
5549226	GRAFENO 220-C VV			21120-7270	1267,2-436,2	13				
5559254	GRAFENO 250-A VV			33560-12750	2013,6-765	8				
5559255	GRAFENO 250-B VV	250	185	29220-10520	1753,2-631,2	10	75	DN80	3410x1760x2140	4.250
5559256	GRAFENO 250-C VV			25140-8650	1508,4-519	10				

High PRESSURE

THORDÖN



THORDÖN High POWER with maximum portability. Reaching 30 bar was reserved for large and expensive equipment. Thordon was born due to the need for greater pressure on time and in different locations too.

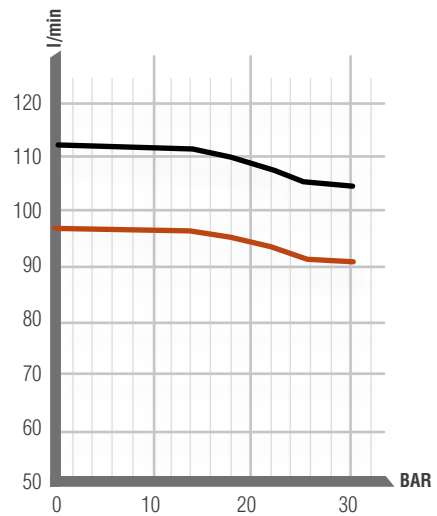
Extremely light and versatile, it can be used simultaneously both 30 bar and 10 bar, so that it becomes a complete and useful portable compressed air station.

Air flow is set according to ISO 1217.

Noise level as CAGI PNEUROF-measured in the open air, at a distance of 1 meter.

Features

- WITHOUT OIL.
- Direct drive.
- Operation at low R.P.M.
- Automatic thermal protection.
- Simultaneous operation up to 10 bar or high pressure up to 30 bar.
- Double pressure reducer.
- Versatile, up to 4 simultaneous connections (two 10 bar and two 30 bar quick couplers)
- Compact, lightweight and portable.
- Easy transport and handling.



Performance curve
 ● 50 Hz 1400 rpm
 ● 60 Hz 1750 rpm



COMPRESORES JOSVAL

SINGLE PHASE



Code	Model	bar	HP	Kw	Lts	l/m	m ³ /h	r.p.m.	dB [A]	LxWxH mm	Kg
5083037	THORDÖN 130M	30	2,2	1,6	20	130	7,8	1400	72	540x600x830	46

AIR treatment

DRYERS

ADSORPTION DRYERS

WATER/OIL
SEPARATORS

FILTERS

TANKS

AIR PIPELINE SYSTEM



DRYERS



Refrigeration dryers of the EDELWEISS series represent the optimal solution for those that require the elimination of moisture in a pneumatic system.

They have been designed for maximum reliability and performance, apart from having very good accessibility for easy inspection and maintenance

EDS SERIES

These dryers should be installed with those compressors which carry a built-in final cooler (BRISA PLUS, MONCAYO, MISTRAL and GRAFENO series).

REDE SERIES

These dryers should be installed with those compressors which are not provided with a final cooler (CIERZO, CLASSIC, BRISA and 4UATTRO series).



EDELWEISS SERIES

EDS - REFRIGERATION DRYERS

Code	Model	l/m	m ³ /h	Kw	Vol/Ph/Hz	bar	BSP	LxWxH mm	Kg
5642000	EDS-400	400	24	0,12	230/1/50	16	3/8"	360x305x404	18
5642002	EDS-900	900	54	0,18	230/1/50	16	1/2"	433x370x435	26
5642012	EDS-1800	1800	108	0,20	230/1/50	16	1/2"	433x370x435	26
5642022	EDS-2400	2400	144	0,41	230/1/50	16	3/4"	515x420x555	33
5642032	EDS-3000	3000	180	0,47	230/1/50	16	3/4"	515x420x555	38
5642042	EDS-4700	4666	280	0,60	230/1/50	16	1"	595x485x614	63
5642052	EDS-5700	5666	340	0,60	230/1/50	16	1"	595x485x614	64
5642082	EDS-8000	8000	480	1,24	230/1/50	14	1 1/2"	679x500x980	110
5642112	EDS-11000	11000	660	1,24	230/1/50	14	2"	720x780x1340	120
5642132	EDS-13000	13000	780	1,90	400/3/50	14	2"	720x780x1340	130
5642162	EDS-16700	16667	1000	1,90	400/3/50	13	2"	720x780x1340	150
5642212	EDS-21700	21667	1300	2,78	400/3/50	13	3"	1360x785x1585	260

REDE - REFRIGERATION DRYERS WITH BUILT-IN COOLER

Code	Model	l/m	m ³ /h	Kw	Vol/Ph/Hz	bar	BSP	LxWxH mm	Kg
5661022	REDE-20	850	51	0,27	230/1/50	14	1/2"	420x415x750	40
5661032	REDE-30	1800	108	0,54	230/1/50	14	1"	410x480x1170	48
5661042	REDE-40	2300	138	0,6	230/1/50	14	1"	410x480x1170	51
5661052	REDE-50	3100	186	0,76	230/1/50	14	1 1/4"	510x515x1320	61
5661062	REDE-60	5500	330	1,02	230/1/50	14	1 1/2"	560x595x1520	75
5661072	REDE-70	6200	372	1,14	230/1/50	14	1 1/2"	560x595x1520	84
5661082	REDE-80	8100	486	1,41	230/1/50	14	2"	710x775x1565	141

DRYERS

adsorption



Certain industrial and process compressed air applications -chemical, pharmaceutical, or laboratory equipment, for example- must be completely free of all suspended water vapour. A refrigeration dryer is suitable for most general applications, but for those requiring absolutely dry air, an adsorption dryer is the only solution.

For these applications, a SAD heatless adsorption dryer will provide a constant pressure dew point of -40°C , or even, on request for special applications, -70°C .

SAD - ADSORPTION DRYERS

Code	Model	l/m	m ³ /h	W	Vol/Ph/Hz	bar	BSP	LxWxH mm	Kg
5645000	SAD-30	30	1,8	50	230/1/50	10	1/4"	50x110x375	2
5645001	SAD-120	120	7	50	230/1/50	10	1/4"	70x170x530	5,6
5645003	SAD-300	300	18	50	230/1/50	10	3/8"	100x218x575	10,5
5645006	SAD-670	667	40	50	230/1/50	10	1/2"	405x470x925	42
5645014	SAD-1400	1333	80	50	230/1/50	10	1/2"	405x470x1280	58
5645020	SAD-2000	2000	120	50	230/1/50	10	1"	455x470x1860	86
5645027	SAD-2700	2667	160	50	230/1/50	10	1"	455x470x1860	86
5645034	SAD-3400	3333	200	50	230/1/50	10	1"	500x550x1650	200
5645067	SAD-6700	6667	400	50	230/1/50	10	1 1/2"	530x825x2160	325
5645080	SAD-8000	8000	480	50	230/1/50	10	1 1/2"	55x796x2380	465
5645125	SAD-12500	12500	750	50	230/1/50	10	2"	620x970x2117	630
5645150	SAD-15000	15000	900	50	230/1/50	10	2"	620x970x2305	700
5645200	SAD-20000	20000	1200	50	230/1/50	10	2 1/2"	710x1220x2475	918
5645250	SAD-25000	25000	1500	50	230/1/50	10	2 1/2"	710x1220x2790	1100
5645334	SAD-33400	33333	2000	50	230/1/50	10	2 1/2"	853x1370x2470	1250

WATER/OIL

separators

Current environmental laws stipulate that most of the oil contaminants must be removed from the condensation generated throughout the air compression process before being evacuated to the drainage system.

SC series achieve an efficient separation of oil from condensation, thanks to a multi-stage process, in compliance with environmental legislation.

Oil/water separators of the SC series are valid for the removal of following types of oil:

1. Mineral oils.
2. Synthetic oils.
3. Condensation emulsions.
4. Polyglycol (check applications and availability).



SC - WATER/OIL SEPARATORS

Code	Model	l/m	m ³ /h	Lts	BSP (In-Out)	LxWxH mm
5656210	SC-1	2000	120	2	1/2"-1/2"	255x230x239
5656220	SC-2	5000	300	5	{2x}1/2"-1"	580x190x610
5656230	SC-3	9000	540	10	{2x}1/2"-1"	650x240x750
5656240	SC-4	18000	1080	15	{2x}1/2"-1"	780x305x900
5656250	SC-5	30000	1800	25	{2x}1/2"-1"	970x380x900

FILTERS

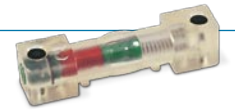


FEP: Suitable filters for the removal of solid particles up to 5 microns including fluids, emulsions and particles of oil. Their strong mechanical resistance makes these filters the ideal initial protection for the beginning of an installation of compressed air, and for retaining the impurities. For example, it is recommended for installation at the inlet of the dryers to pre-filter the FES models.

FES y FEX: Interception filters take advantage of the principle of coalescence, and are suitable for erasing solid particles and oil down to 1 micron.

FEZ: There are industrial processes that, in addition to requiring oil-free air, also require the elimination of oil vapors and odors. To this effect, the activated carbon filter through the process of

Saturation Indicator (optional): it marks the need for replacement of the cartridge.



adsorption attracts all the odors and fumes that are left after the oil removal process, and it keeps in the molecules of the activated carbon grains. Because of this, the filters of the FES and FEX models have to be placed before the filters FEZ.

FE - FILTRATION

FEP FILTERS (PRE-FILTERS)

*Solid particles up to 5 microns.

Code	Model	l/m	m ³ /h	bar	BSP
5676005	FEP-560	560	33	16	3/8"
5676012	FEP-1200	1170	70	16	1/2"
5676018	FEP-1800	1800	108	16	3/4"
5676030	FEP-3000	3000	180	16	3/4"
5676034	FEP-3400	3400	204	16	1"
5676050	FEP-5000	5000	300	16	1"
5676072	FEP-7200	7200	432	16	1 1/2"
5676104	FEP-10400	10400	620	16	1 1/2"
5676128	FEP-12800	12800	770	16	2"
5676165	FEP-16500	16500	990	16	2"
5676190	FEP-19000	19000	1140	16	2 1/2"
5676220	FEP-22000	22000	1320	16	2 1/2"
5676280	FEP-28000	28000	1680	16	3"
5676350	FEP-35000	35000	2100	16	3"

FES FILTERS (INTERCEPTION)

*Solid particles up to 1 micron.

Code	Model	l/m	m ³ /h	bar	BSP
5677005	FES-560	560	33	16	3/8"
5677012	FES-1200	1170	70	16	1/2"
5677018	FES-1800	1800	108	16	3/4"
5677030	FES-3000	3000	180	16	3/4"
5677034	FES-3400	3400	204	16	1"
5677050	FES-5000	5000	300	16	1"
5677072	FES-7200	7200	432	16	1 1/2"
5677104	FES-10400	10400	620	16	1 1/2"
5677128	FES-12800	12800	770	16	2"
5677165	FES-16500	16500	990	16	2"
5677190	FES-19000	19000	1140	16	2 1/2"
5677220	FES-22000	22000	1320	16	2 1/2"
5677280	FES-28000	28000	1680	16	3"
5677350	FES-35000	35000	2100	16	3"

Maximum residual oil content of 0,1 mg/m³

FEX FILTERS (INTERCEPTION)

*Solid particles up to 0,01 microns.

Code	Model	l/m	m ³ /h	bar	BSP
5678005	FEX-560	560	33	16	3/8"
5678012	FEX-1200	1170	70	16	1/2"
5678018	FEX-1800	1800	108	16	3/4"
5678030	FEX-3000	3000	180	16	3/4"
5678034	FEX-3400	3400	204	16	1"
5678050	FEX-5000	5000	300	16	1"
5678072	FEX-7200	7200	432	16	1 1/2"
5678104	FEX-10400	10400	620	16	1 1/2"
5678128	FEX-12800	12800	770	16	2"
5678165	FEX-16500	16500	990	16	2"
5678190	FEX-19000	19000	1140	16	2 1/2"
5678220	FEX-22000	22000	1320	16	2 1/2"
5678280	FEX-28000	28000	1680	16	3"
5678350	FEX-35000	35000	2100	16	3"

Maximum residual oil content of 0,01 mg/m³

FEZ FILTERS (ACTIVATED CARBON)

Code	Model	l/m	m ³ /h	bar	BSP
5679005	FEZ-560	560	33	16	3/8"
5679012	FEZ-1200	1170	70	16	1/2"
5679018	FEZ-1800	1800	108	16	3/4"
5679030	FEZ-3000	3000	180	16	3/4"
5679034	FEZ-3400	3400	204	16	1"
5679050	FEZ-5000	5000	300	16	1"
5679072	FEZ-7200	7200	432	16	1 1/2"
5679104	FEZ-10400	10400	620	16	1 1/2"
5679128	FEZ-12800	12800	770	16	2"
5679165	FEZ-16500	16500	990	16	2"
5679190	FEZ-19000	19000	1140	16	2 1/2"
5679220	FEZ-22000	22000	1320	16	2 1/2"
5679280	FEZ-28000	28000	1680	16	3"
5679350	FEZ-35000	35000	2100	16	3"

Maximum residual oil content of 0,003 mg/m³

TANKS

All our tanks are equipped with a pressure gauge, safety valve and drain cock included in the price.

Manufactured according to EU directives 2009/105/EC and 97/23/EC.

We recommend draining the tank weekly or the installation of an electronic drain to ensure the absence of water in its interior.



Electronic drain (optional): removes the condensation of the air tank by a regulated device, timed electronically, without loss of compressed air and with a minimum energy cost.

HORIZONTAL TANKS

Code	Model	Lts	bar	BSP (In-Out)	LxWxH mm	Kg
5590075	DH 100	100	11	1/2 - 1/2"	1050x440x680	35
5590185	DH 200	200	11	1/2 - 1/2"	1380x440x575	53
5590195	DH 300	270	11	1/2 - 1/2"	1490x515x625	65
5590215	DH 500	500	11	3/4 - 1/2"	1900x600x775	123
5591076	DH 100	100	15	1/2 - 1/2"	1120x670x680	54
5591184	DH 200	200	15	1/2 - 1/2"	1380x440x575	63
5591196	DH 300	300	15	1/2 - 1/2"	1630x515x625	80
5591215	DH 500	500	15	3/4 - 1/2"	1900x600x775	154

Tanks up to 100 liters (both 11 and 15 bar), are equipped with handle and wheels for easy transport.

VERTICAL TANKS

Code	Model	Lts	bar	BSP (In-Out)	LxWxH mm	Kg
5590179	DV 100	100	11	1/2"	370x370x1165	28
5590199	DV 270	270	11	1"	490x490x1670	65
5590219	DV 500	500	11	1"	600x600x2055	123
5590259	DV 1000	1000	11	2"	790x790x2365	195
5590269	DV 2000	2000	11	2"	1000x1000x2810	375
5591179	DV 100	100	15	1/2"	370x370x1150	48
5591199	DV 300	300	15	1"	490x490x1820	80
5591219	DV 500	500	15	1"	600x600x2055	154
5591259	DV 1000	1000	16	2"	790x790x2365	315
5591269	DV 2000	2000	16	2"	1000x1000x2810	490

HIGH PRESSURE VERTICAL TANKS

Code	Model	Lts	bar	BSP (In-Out)	LxWxH mm	Kg
5596212	DV 500	500	42	1 ¼" - 2"	600x600x2140	340
5596252	DV 1000	1000	42	2" - 2"	790x790x2385	605
5596902	DV 1500	1500	42	2" - 2"	950x950x2460	850
5596262	DV 2000	2000	42	2" - 2"	1000x1000x2810	1025
5596302	DV 3000	3000	42	2" - 2"	1200x1200x2970	1450
5596912	DV 4000	4000	42	2" - 2"	1430x1430x3160	2190
5596922	DV 5000	5000	42	2" - 2"	1430x1430x3660	2515
5596258	DV 1000	1000	48	2" - 2"	790x790x2400	725
5596268	DV 2000	2000	48	2" - 2"	1000x1000x2810	1195
5596308	DV 3000	3000	48	2" - 2"	1200x1200x2970	1685



GALVANIZED VERTICAL TANKS

Code	Model	Lts	bar	BSP (In-Out)	LxWxH mm	Kg
5596191	DV 270	270	11	1"	500x500x1648	70
5596211	DV 500	500	11	2"	600x600x1665	119
5596291	DV 900	900	11	1 ½"	800x800x1805	198
5596251	DV 1000	1000	12	2"	800x800x2350	214
5596901	DV 1500	1500	12	2"	1000x1000x2305	325
5596261	DV 2000	2000	12	2"	1100x1100x2490	394
5596301	DV 3000	3000	12	2"	1200x1200x2990	600
5596911	DV 4000	4000	12	3"	1450x1450x2790	685
5596921	DV 5000	5000	12	3"	1450x1450x3390	808
5596931	DV 6000	6000	12	3"	1450x1450x3990	930
5596941	DV 8000	8000	12	3"	1650x1650x4315	1470
5596951	DV 10000	10000	12	3"	1650x1650x5200	1730
5596196	DV 270	270	16	1"	500x500x1648	104
5596216	DV 500	500	16	2"	600x600x2050	149
5596256	DV 1000	1000	16	2"	800x800x2350	249
5596266	DV 2000	2000	16	2"	1100x1100x2490	455



STAINLESS STEEL - AISI 304 - VERTICAL TANKS

Code	Model	Lts	bar	BSP (In-Out)	LxWxH mm	Kg
5596197	DV 270	270	11	1"	500x500x1748	69
5596217	DV 500	500	11	1"	600x600x2055	125
5596257	DV 1000	1000	11	2"	800x800x2353	377



VACUUM VERTICAL TANKS

Code	Model	Lts	bar	BSP (In-Out)	LxWxH mm	Kg
5596190	DV 270	270	-1	1"	500x500x1648	101
5596210	DV 500	500	-1	2"	600x600x2050	145
5596250	DV 1000	1000	-1	2"	800x800x2350	245
5596260	DV 2000	2000	-1	2"	1100x1100x2490	450
5596300	DV 3000	3000	-1	2"	1200x1200x2990	630



Approximate weights and dimensions. Ask for availability.

AIR PIPELINE SYSTEM

MODULAR COMPRESSED AIR PIPING SYSTEM

Compresores JOSVAL offers a wide range of modular system aluminium tube for compressed air.

Pipes and fittings are available for all needs -vacuum, high pressure and low pressure- with diameters ranging from 20 mm to 160 mm.

For optimum performance and longer life of machines and tools, it is essential to have a good quality network designed and suited to the needs of each company.

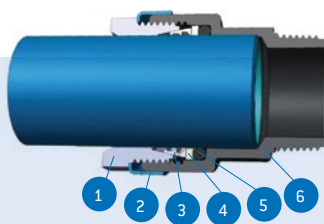
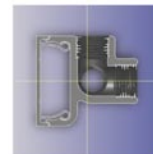
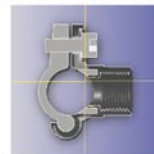
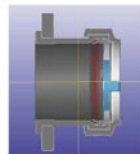
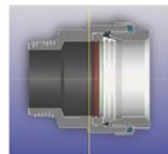
Apart from that, we are authorized installers, so once the installation is over, Compresores JOSVAL may provide the certificate of installation (CE), essential to legalize the network and pressure vessels.

BENEFITS:

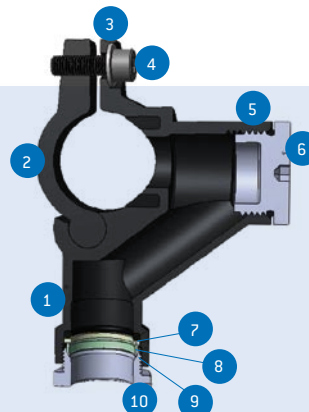
- Energy saving.
- Highest quality aluminum.
- Easy, fast and safe installation.
- Instant connection.
- Increased air flow.
- High mechanical stress.
- Rust and corrosion free.
- Modular.

TECHNICAL DETAILS

Some technical characteristics	AIRE	VACUUM	AIR (HIGH PRESSURE)
Standard colour	RAL 5012	RAL 7046	RAL 5017
Max working pressure	16 Bar	-10 mbar	30 - 40 - 70 Bar
Plant testing pressure 1 hour at 20°C	24 Bar	24 Bar	45 - 60 - 105 Bar
Quality testing pressure 1 hour at 20°C	64 Bar	64 Bar	120 - 160 - 280 Bar
Production tested percentage	1%	1%	100%
Continuous service temperature limit	From -20°C up to 100°C		
Peak max. working temperature	From -30°C up to 130°C		
Aluminium pipe mechanical resistance	According to EN-755-2/2008 standards		
Pipe material	Aluminium alloy EN AW 6060- T5 according to EN 755-2/2008		
Pipe thickness (mm)	020-S1,0 / 025-S1,1 / 032-S1,2 040-S1,3 / 050-S1,4 / 063-S1,8 090-S2,0		020-S2,0 / 025-S2,5 / 032-S3,0 / 040-S4,0 / 050-S5,0 / 063-6,0 (PN70) / 090-S3,0 / 0110-S3,5 (PN40)
Aluminium fittings material	Aluminium alloy EN AW 6061 T6		
O-ring & lip gasket material	NBR 65°/75° Shore A		
Clamp ring material	AISI 304 Stainless Steel		



1. Ring
2. Identification ring
3. Extruded aluminum tube calibrated and painted
4. Clamp ring (not present in Dn 50)
5. Fitting O-ring
6. Fitting body



1. By-pass
2. Blind
3. Washer
4. Allen screw
5. Plug seal
6. Plug
7. Seal
8. Washer (not present in all measures)
9. Fixation ring
10. Clamp nut

LUBRICANTS

JOSVAL oils



ENERGY+ SERIES OILS (SCREW AND PISTON)

ENERGY+ series oils are formulated with high quality base oils and performance enhancing additives which increase oxidation resistance and ensure good wear and corrosion protection.

ENERGY+ series oils offer unbeatable value for the money.



FORTE SERIES OILS (SCREW AND PISTON)

FORTE series oils are high quality mineral base oils designed to meet the most stringent requirements of our customers. They are formulated with high performance additives which provide an excellent wear and corrosion protection, reduce maintenance costs and enhance equipment life and performance.

Compresores JOSVAL, as the manufacturer, recommends using FORTE series oils in demanding environments.



TECONROT SERIES OILS

Synthetic oil is specially designed to achieve the maximum performance of TECONROT series screw compressors.



GRAFENOIL SERIES OILS

PAO next generation synthetic oils have advanced lubrication properties at both high and low temperatures, low volatility, high oxidative stability, and are formulated to provide long service life (6.000 and 8.000 hours).



AQUATIC SERIES OILS

High performance mineral oil specific for AQUATIC series compressors is based on the mixture of selected base oils and special multifunctional additives that protect the metal parts against wear, corrosion and rust.



FOOD GRADE SERIES OILS (SCREW AND PISTON)

NSF H1 approved oils are for screw and piston compressors, and are suitable for certain clinical and food applications.

ENERGY EFFICIENCY

multicontrol

Energy consumption has increased significantly in recent years, and this increased use of energy resources on the part of companies has resulted in the need to be planning and taking measures to reduce costs.

For this reason it is advisable to make an intelligent use of energy, and for that purpose Compresores JOSVAL integrates its range of products called Multicontrol.

Multicontrol devices are used to fully integrate compressed air systems in the centers of production, optimizing the air generation and managing the key aspects of the system with detailed, easy-to-use information and very visual software.

Simply put, Multicontrol devices can be used to operate the air compressors in a more efficient manner and, furthermore, they **allow you to control any compressor on the market.**

For installations with multiple compressors, these products **can reduce power consumption by up to 30 %**, which translates into savings of up to thousands of Euros per year.

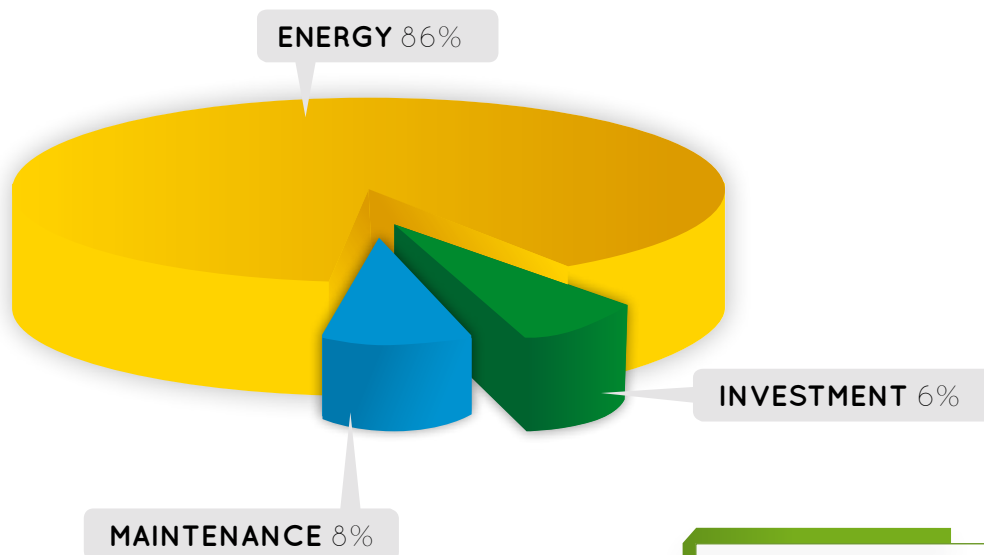
Energy is the most important factor in the total cost of the compressor, and may represent more than 80% of the costs within the life cycle of the unit.

A customer who saves energy improves their “green credentials” and, most importantly, you can drastically reduce your energy costs.

- Reduction in the energy consumption up to 30%
- Reduction in the carbon footprint
- Reduction in the CO₂ emissions



For these reasons it is very important to make the correct choice for your compressed air production system. With the aforementioned Multicontrol devices combined with the use of variable speed compressors, you can avoid the unnecessary consumption when, for example, the compressors are working in unload mode.



Multicontrol units have a broad range of industrial applications such as:

- Bottle plants PET
- Automobile manufacturing
- Automotive components
- Printing and paper industry
- Pharmaceutical
- Food processing

Compatible with:

- Air compressors (any type)
- Dryers
- PLC's
- Drivers
- Inverters



FEATURES:

- Control of compressed air equipment.
- Automation of auxiliary equipment (drying, filtration, cooling, etc.)
- Device control (flow rate, pressure, temperature, etc.)
- Monitoring and access to the system.
- Browser accessible through control display .
- Report of system performance.
- Incident notice via email and SMS.
- Integration with Modbus, Profibus, DeviceNet, etc.
- Support for BMS integration.



SALE TERMS & GENERAL INFORMATION

This catalogue price list replaces all previous lists and is valid until the publication of a new one.

The price indicated does not include VAT.

Shipments will be carried out from our warehouse and freight is to be prepaid by the purchaser, as well as any costs associated with the return of the goods.

It is the obligation of the buyer to thoroughly review the goods at the time of its receipt and check its condition, as well as notify in writing to the carrier and to Compresores JOSVAL, S.L. any damage suffered during the transport within 24 hours of its receipt. Past this time, Compresores JOSVAL, S.L. cannot accept any warranty claim regarding transport damages.

These terms may be subject to change without notice and shall be construed as fully accepted with the confirmation of the order.

Technical data and photographs may be changed without notice and without obligation for Compresores JOSVAL, S.L.

WARRANTY

The warranty refers only to the faults or defects that may be attributable to the manufacturer, its period of validity being for 1 year from the date of sale of the machine.

The warranty does not cover any damages due to incorrect installation or improper maintenance of the equipment, which we have not addressed in the instructions expressed in the manufacturer's manual.

The warranty is declared null with any modification made to the compressor without the express permission of JOSVAL, and also, the use of non-original JOSVAL parts will result in the loss of warranty.

Not included in the warranty are the replacement of parts and materials due to wear or supplies (maintenance), as well as motors or other electrical/electronic components and electrical/electronic equipment.

Warranty claims must be filed immediately after the defect is observed, with a detailed written report of the defect.

All cost incurred by demands of the warranty which prove to be irrelevant, shall be assumed by the buyer.

Repairs covered by the warranty will be provided in our facilities, being that all costs associated with travel or transport are incurred by the customer.

Damaged parts or faulty items should be sent with postage paid to JOSVAL, who will then consider and determine whether or not the warranty claim is valid.

JOSVAL, when fulfilling a warranty claim, will decide to repair the defects or replace defective parts.

The parts replaced under warranty have a validity period of 6 months following their replacement.

This warranty excludes any condition that has not been expressly given.

ISO 9001 - QUALITY MANAGEMENT SYSTEM CERTIFICATION

SGS

Certificado ES04/0608

El sistema de gestión de

COMPRESORES JOSVAL, S.L.

Pol. Ind. Malpica
Calle F, nº 50 A
50016 Zaragoza

ha sido evaluado y certificado en cuanto al cumplimiento de los requisitos de

ISO 9001:2008

Para las siguientes actividades

- ✓ Diseño, fabricación, comercialización y servicio posventa de compresores de pistón y tornillo, depósitos para aire comprimido y cabezales.
- ✓ Distribución y servicio posventa de equipos de tratamiento de aire comprimido.

en/desde los siguientes emplazamientos

Pol. Ind. Malpica, Calle F, nº 50 A - 50016 Zaragoza

Este certificado es válido desde
14 de septiembre de 2013 hasta 14 de septiembre de 2016.
Edición 5. Certificado con SGS desde septiembre de 2004.

Autorizado por



Dirección de Certificación
SGS ICS Ibérica, S.A. (Unipersonal) Systems & Services Certification
C/Trespaderne, 29. 28042 Madrid, España.
t 34 91 313 8115 | 34 91 313 8102 | www.sgs.com

Página 1 de 1




Este documento se emite por SGS bajo sus condiciones generales de servicio, a las que se puede acceder en http://www.sgs.com/terms_and_conditions.htm. La responsabilidad de SGS queda limitada en los términos establecidos en las citadas condiciones generales que resultan de aplicación a la prestación de sus servicios. La autenticidad de este documento puede ser comprobada en <http://www.sgs.com/ics/Company/Certified-Client-Directories/Certified-Client-Directories.aspx>. El presente documento no podrá ser alterado ni modificado, ni en su contenido ni en su apariencia. En caso de modificación del mismo, SGS se reserva las acciones legales que estime oportunas para la defensa de sus legítimos intereses.



ej
COMPRESORES
JOSVAL

Pol. Ind. Malpica, c/ F, 50A - 50016 Zaragoza (Spain)
Tel. +34 976 57 14 26 - info@compresoresjosval.com

www.compresoresjosval.com

